

bod'or

Table of dimensions

Door frame solutions

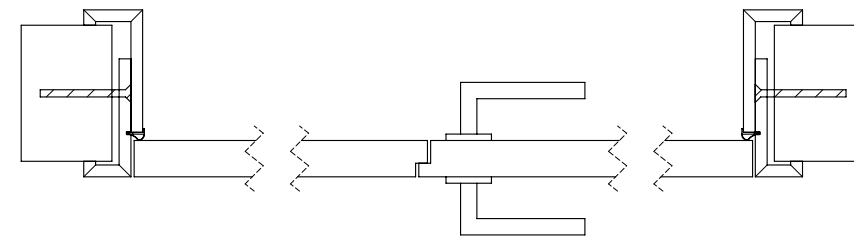
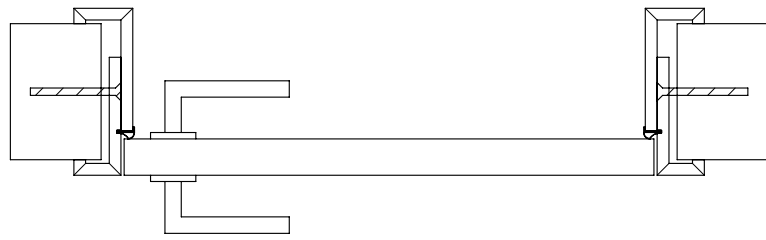
BOD'OR

Table of dimensions door frame solutions

| | Page |
|--|------|
| Cube on the wall - with chiseling wall | 4 |
| Cube on the wall - without chiseling wall | 6 |
| Re-Cube on the wall | 8 |
| Cube flush with the wall 6 mm shadow gap | 10 |
| RE-Cube flush with the wall 6 mm shadow gap | 12 |
| Cube flush with the wall 12 mm shadow gap | 14 |
| RE-Cube flush with the wall 12 mm shadow gap | 16 |
| Cube SF | 18 |
| Under-Cover Doorframes | 20 |
| RE-Under-Cover Doorframes | 22 |



Cube on the wall - with chiseling wall



Single door

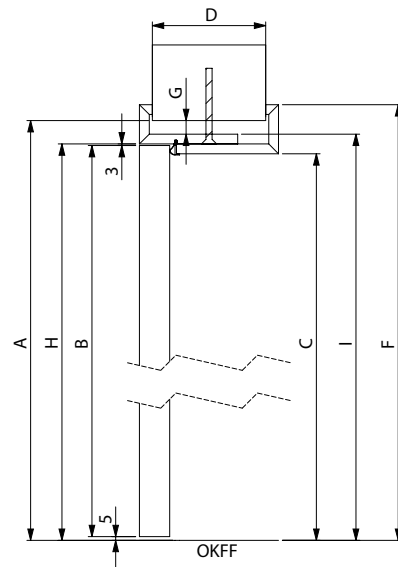
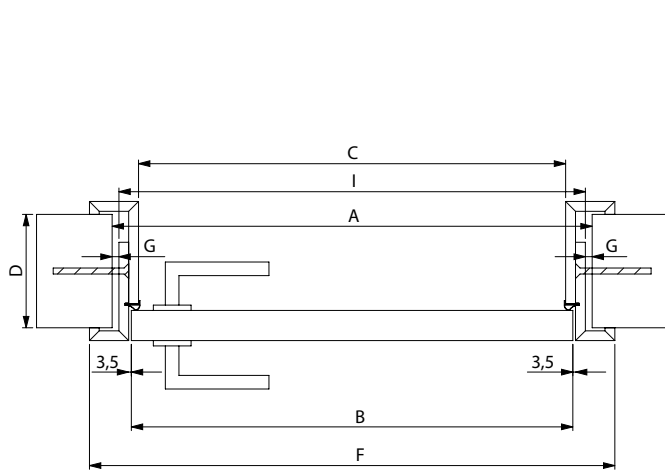
In the dimension table, the outer dimension of the door leaf is the basic dimension.
Calculation tool can be found at <https://www.bodor.eu/producten/cube-on-the-wall>

| | A | | B | | | H | | | F | | | I | | | C | | | |
|-------|-------------------------|------|----------------|--------|------|------------------------|--------|------|-----------------------|--------|------|----------------------------|--------|------|---------------------|--------|------|-------|
| | Structural wall opening | | Door dimension | | | Frame rebate dimension | | | Frame outer dimension | | | Frame outer edge dimension | | | Clearance dimension | | | |
| Width | + 51 mm | | 0 | | | + 7 mm | | | + 111 mm | | | + 32 mm | | | - 19 mm | | | |
| | Height | x | Width | Height | x | Width | Height | x | Width | Height | x | Width | Height | x | Width | Height | x | Width |
| | | | 635 | | | 584 | | | 591 | | | 695 | | | 616 | | | 565 |
| | | | 760 | | | 709 | | | 716 | | | 820 | | | 741 | | | 690 |
| | | | 885 | | | 834 | | | 841 | | | 945 | | | 866 | | | 815 |
| | | | 1010 | | | 959 | | | 966 | | | 1070 | | | 991 | | | 940 |
| | | | 1135 | | | 1084 | | | 1091 | | | 1195 | | | 1116 | | | 1065 |
| | | 1260 | | | 1209 | | | 1216 | | | 1320 | | | 1241 | | | 1190 | |

| | + 38 mm | | 0 | | + 8 mm | | + 60 mm | | + 20 mm | | - 5 mm | |
|--|---------|------|------|------|--------|------|---------|------|---------|------|--------|------|
| | Height | 2053 | 2015 | 2023 | 2075 | 2035 | 2010 | 2153 | 2115 | 2123 | 2175 | 2135 |
| | 2260 | 2222 | 2230 | 2282 | 2242 | 2217 | 2385 | 2347 | 2355 | 2407 | 2367 | 2342 |
| | 2510 | 2472 | 2480 | 2532 | 2492 | 2467 | 2635 | 2597 | 2605 | 2657 | 2617 | 2592 |
| | 2760 | 2722 | 2730 | 2782 | 2742 | 2717 | 2885 | 2847 | 2855 | 2907 | 2867 | 2842 |
| | 3010 | 2972 | 2980 | 3032 | 2992 | 2967 | | | | | | |

Finished wall thickness min. 65 mm

Installation space: Width 2 x 9,5 = 19 mm Top 18 mm



OKFF = Oberkante Fertig Fußboden
Top finished floor

Double door

In the dimension table, the outer dimension of the door leaf is the basic dimension.
Calculation tool can be found at <https://www.bodor.eu/producten/cube-on-the-wall>

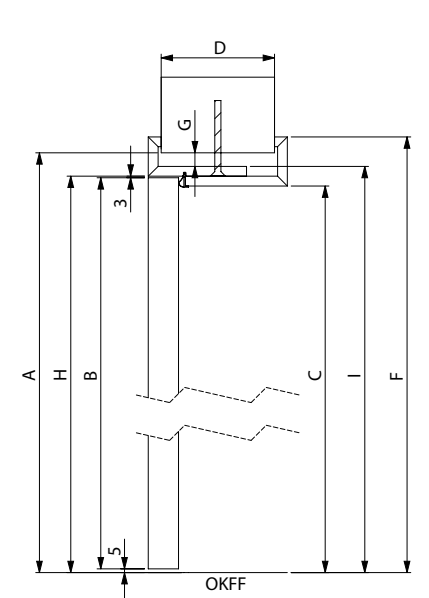
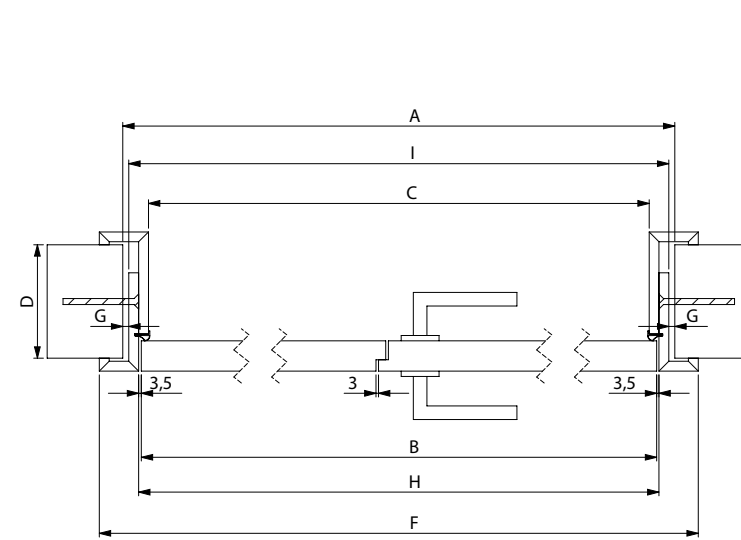
| | A | | B | | | H | | | F | | | I | | | C | | | |
|-------|-------------------------|------|----------------|--------|------|------------------------|--------|------|-----------------------|--------|------|----------------------------|--------|------|---------------------|--------|------|-------|
| | Structural wall opening | | Door dimension | | | Frame rebate dimension | | | Frame outer dimension | | | Frame outer edge dimension | | | Clearance dimension | | | |
| Width | + 66 mm | | 0 | | | + 7 mm | | | + 111 mm | | | + 32 mm | | | - 19 mm | | | |
| | Height | x | Width | Height | x | Width | Height | x | Width | Height | x | Width | Height | x | Width | Height | x | Width |
| | | | 1500 | | | 1434 | | | 1441 | | | 1545 | | | 1466 | | | 1415 |
| | | | 1750 | | | 1684 | | | 1691 | | | 1795 | | | 1716 | | | 1665 |
| | | 2000 | | | 1934 | | | 1941 | | | 2045 | | | 1966 | | | 1915 | |

| | + 38 mm | | 0 | | + 8 mm | | + 60 mm | | + 20 mm | | - 5 mm | |
|--|---------|------|------|------|--------|------|---------|------|---------|------|--------|------|
| | Height | 2053 | 2015 | 2023 | 2075 | 2035 | 2010 | 2153 | 2115 | 2123 | 2175 | 2135 |
| | 2260 | 2222 | 2230 | 2282 | 2242 | 2217 | 2385 | 2347 | 2355 | 2407 | 2367 | 2342 |
| | 2510 | 2472 | 2480 | 2532 | 2492 | 2467 | 2635 | 2597 | 2605 | 2657 | 2617 | 2592 |
| | 2760 | 2722 | 2730 | 2782 | 2742 | 2717 | 2885 | 2847 | 2855 | 2907 | 2867 | 2842 |
| | 3010 | 2972 | 2980 | 3032 | 2992 | 2967 | | | | | | |

* 2 x 722 mm
* 2 x 847 mm
* 2 x 972 mm

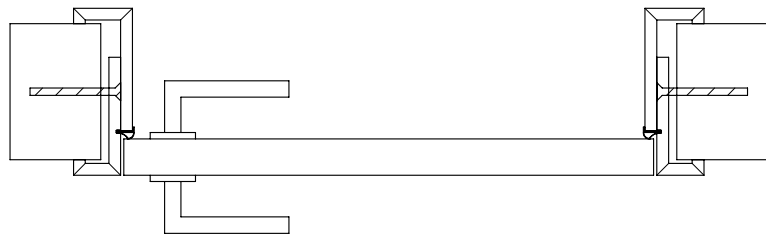
Finished wall thickness min. 65 mm

Installation space: Width 2 x 9,5 = 19 mm Top 18 mm



OKFF = Oberkante Fertig Fußboden
Top finished floor

Cube on the wall - without chiseling wall



Single door

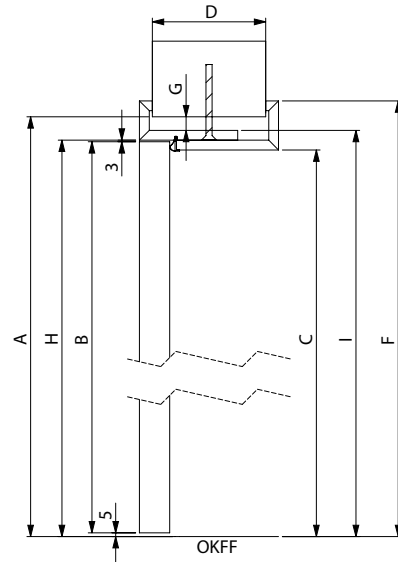
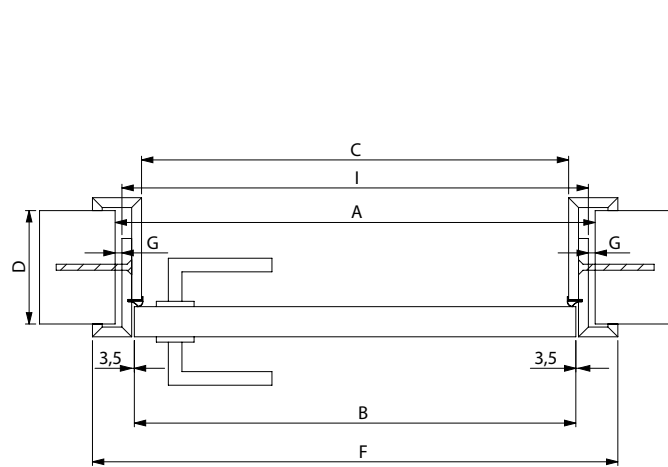
In the dimension table, the outer dimension of the door leaf is the basic dimension.
Calculation tool can be found at <https://www.bodor.eu/producten/cube-on-the-wall>

| | A | | | B | | | H | | | F | | | I | | | C | | |
|-------|-------------------------|---|-------|----------------|---|-------|------------------------|---|-------|-----------------------|---|-------|----------------------------|---|-------|---------------------|---|-------|
| | Structural wall opening | | | Door dimension | | | Frame rebate dimension | | | Frame outer dimension | | | Frame outer edge dimension | | | Clearance dimension | | |
| | + 76 mm | | | 0 | | | + 7 mm | | | + 111 mm | | | + 32 mm | | | - 19 mm | | |
| Width | Height | x | Width | Height | x | Width | Height | x | Width | Height | x | Width | Height | x | Width | Height | x | Width |
| | | | 660 | | | 584 | | | 591 | | | 695 | | | 616 | | | 565 |
| | | | 785 | | | 709 | | | 716 | | | 820 | | | 741 | | | 690 |
| | | | 910 | | | 834 | | | 841 | | | 945 | | | 866 | | | 815 |
| | | | 1035 | | | 959 | | | 966 | | | 1070 | | | 991 | | | 940 |
| | | | 1160 | | | 1084 | | | 1091 | | | 1195 | | | 1116 | | | 1065 |
| | | | 1285 | | | 1209 | | | 1216 | | | 1320 | | | 1241 | | | 1190 |

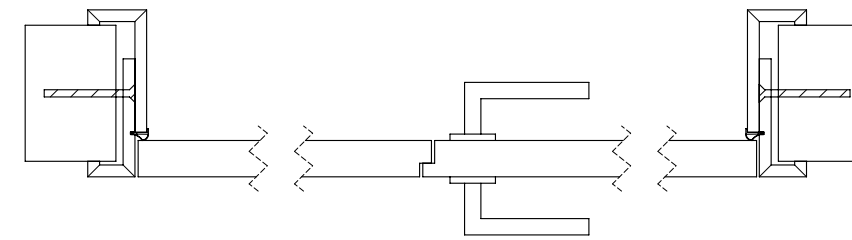
| Height | + 38 mm | 0 | + 8 mm | + 60 mm | + 20 mm | - 5 mm |
|--------|---------|------|--------|---------|---------|--------|
| | 2053 | 2015 | 2023 | 2075 | 2035 | 2010 |
| 2153 | 2115 | 2123 | 2175 | 2135 | 2110 | |
| 2260 | 2222 | 2230 | 2282 | 2242 | 2217 | |
| 2385 | 2347 | 2355 | 2407 | 2367 | 2342 | |
| 2510 | 2472 | 2480 | 2532 | 2492 | 2467 | |
| 2635 | 2597 | 2605 | 2657 | 2617 | 2592 | |
| 2760 | 2722 | 2730 | 2782 | 2742 | 2717 | |
| 2885 | 2847 | 2855 | 2907 | 2867 | 2842 | |
| 3010 | 2972 | 2980 | 3032 | 2992 | 2967 | |

Finished wall thickness min. 65 mm

Installation space: Width 9,5+24+9,5 = 43 mm Top 18 mm



OKFF = Oberkante Fertig Fußboden
Top finished floor



Double door

In the dimension table, the outer dimension of the door leaf is the basic dimension.
Calculation tool can be found at <https://www.bodor.eu/producten/cube-on-the-wall>

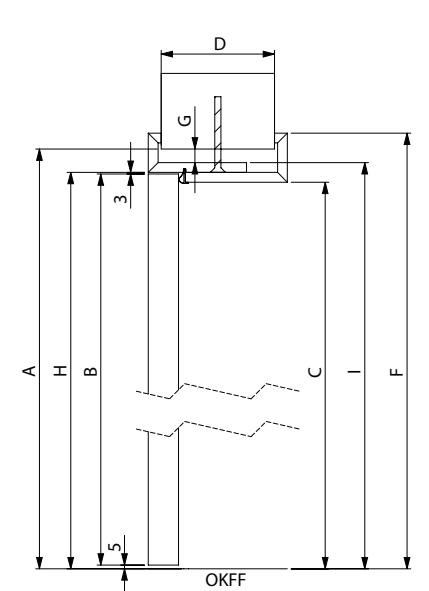
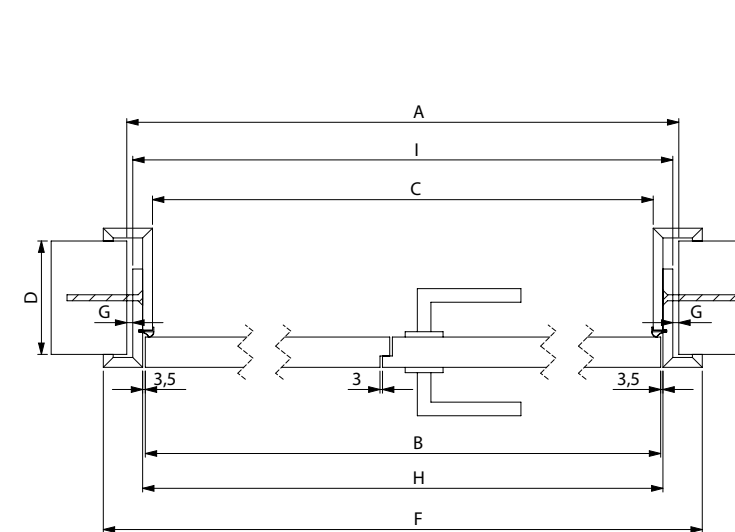
| | A | | | B | | | H | | | F | | | I | | | C | | |
|-------|-------------------------|---|-------|----------------|---|-------|------------------------|---|-------|-----------------------|---|-------|----------------------------|---|-------|---------------------|---|-------|
| | Structural wall opening | | | Door dimension | | | Frame rebate dimension | | | Frame outer dimension | | | Frame outer edge dimension | | | Clearance dimension | | |
| | + 91 mm | | | 0 | | | + 7 mm | | | + 111 mm | | | + 32 mm | | | - 19 mm | | |
| Width | Height | x | Width | Height | x | Width | Height | x | Width | Height | x | Width | Height | x | Width | Height | x | Width |
| | | | 1525 | | | 1434 | | | 1441 | | | 1545 | | | 1466 | | | 1415 |
| | | | 1775 | | | 1684 | | | 1691 | | | 1795 | | | 1716 | | | 1665 |
| | | | 2025 | | | 1934 | | | 1941 | | | 2045 | | | 1966 | | | 1915 |

| Height | + 38 mm | 0 | + 8 mm | + 60 mm | + 20 mm | - 5 mm |
|--------|---------|------|--------|---------|---------|--------|
| | 2053 | 2015 | 2023 | 2075 | 2035 | 2010 |
| 2153 | 2115 | 2123 | 2175 | 2135 | 2110 | |
| 2260 | 2222 | 2230 | 2282 | 2242 | 2217 | |
| 2385 | 2347 | 2355 | 2407 | 2367 | 2342 | |
| 2510 | 2472 | 2480 | 2532 | 2492 | 2467 | |
| 2635 | 2597 | 2605 | 2657 | 2617 | 2592 | |
| 2760 | 2722 | 2730 | 2782 | 2742 | 2717 | |
| 2885 | 2847 | 2855 | 2907 | 2867 | 2842 | |
| 3010 | 2972 | 2980 | 3032 | 2992 | 2967 | |

- * 2 x 722 mm
- * 2 x 847 mm
- * 2 x 972 mm

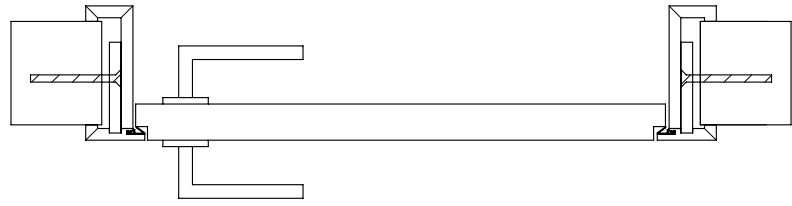
Finished wall thickness min. 65 mm

Installation space: Width 9,5+40+9,5 = 59 mm Top 18 mm



OKFF = Oberkante Fertig Fußboden
Top finished floor

RE-Cube on the wall



Single door

In the dimension table, the outer dimension of the door leaf is the basic dimension.
Calculation tool can be found at <https://www.bodor.eu/producten/re-cube-on-the-wall>

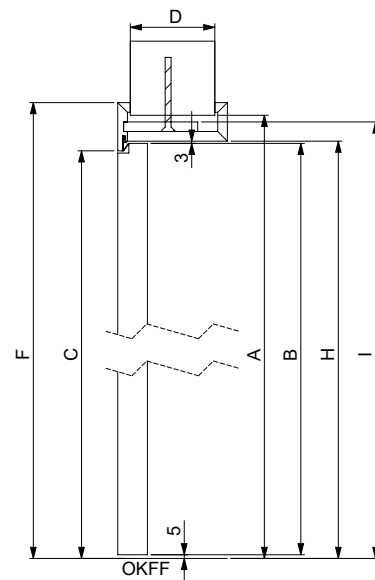
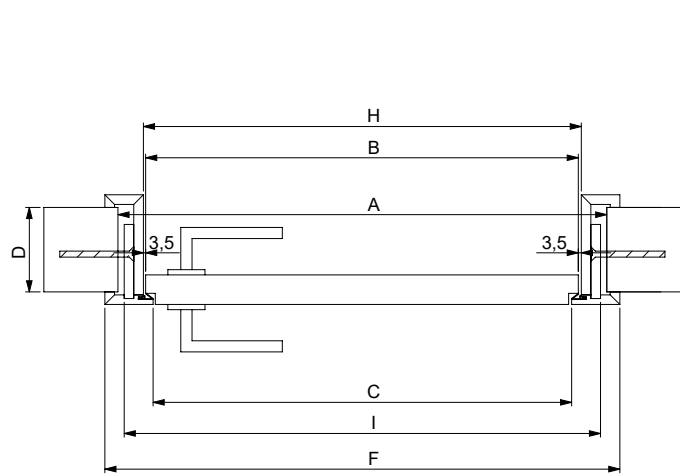
| | A | | B | | H | | F | | I | | C | | | | | | | |
|-------|-------------------------|------|----------------|--------|------------------------|-------|-----------------------|------|----------------------------|--------|---------------------|-------|--|------|------|--|------|------|
| | Structural wall opening | | Door dimension | | Frame rebate dimension | | Frame outer dimension | | Frame outer edge dimension | | Clearance dimension | | | | | | | |
| Width | + 76 mm | | 0 | | + 7 mm | | + 111 mm | | + 66 mm | | - 19 mm | | | | | | | |
| | Height | x | Width | Height | x | Width | Height | x | Width | Height | x | Width | | | | | | |
| | | | 660 | | | 584 | | | 591 | | | 695 | | | 650 | | | 565 |
| | | | 785 | | | 709 | | | 716 | | | 820 | | | 775 | | | 690 |
| | | | 910 | | | 834 | | | 841 | | | 945 | | | 900 | | | 815 |
| | | | 1035 | | | 959 | | | 966 | | | 1070 | | | 1025 | | | 940 |
| | | | 1160 | | | 1084 | | | 1091 | | | 1195 | | | 1150 | | | 1065 |
| | | 1285 | | | 1209 | | | 1216 | | | 1320 | | | 1275 | | | 1190 | |

| | + 43 mm | | 0 | | + 8 mm | | + 60 mm | | + 34 mm | | - 5 mm | |
|------|---------|------|------|------|--------|------|---------|------|---------|------|--------|------|
| | Height | 2058 | | 2015 | | 2023 | | 2075 | | 2049 | | 2010 |
| 2158 | | | 2115 | | 2123 | | 2175 | | 2149 | | 2110 | |
| 2265 | | | 2222 | | 2230 | | 2282 | | 2256 | | 2217 | |
| 2390 | | | 2347 | | 2355 | | 2407 | | 2381 | | 2342 | |
| 2515 | | | 2472 | | 2480 | | 2532 | | 2506 | | 2467 | |
| 2640 | | | 2597 | | 2605 | | 2657 | | 2631 | | 2592 | |
| 2765 | | | 2722 | | 2730 | | 2782 | | 2756 | | 2717 | |
| 2890 | | | 2847 | | 2855 | | 2907 | | 2881 | | 2842 | |
| 3015 | | | 2972 | | 2980 | | 3032 | | 3006 | | 2967 | |

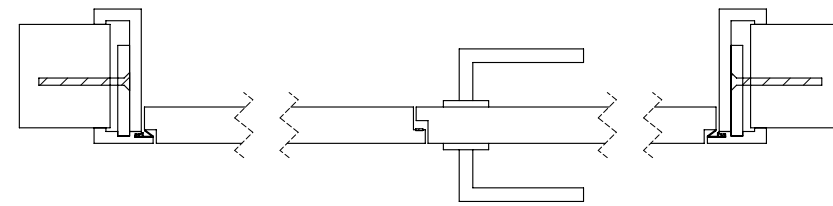
Finished wall thickness min. 65 mm

Attention: Frames are delivered at exact wall thickness. There is no tolerance for walls that do not have same thickness at all positions

Installation space: Width 2 x 5 = 10 mm Top 9 mm



OKFF = Oberkante Fertig Fußboden
Top finished floor



Double door

In the dimension table, the outer dimension of the door leaf is the basic dimension.
Calculation tool can be found at <https://www.bodor.eu/producten/re-cube-on-the-wall>

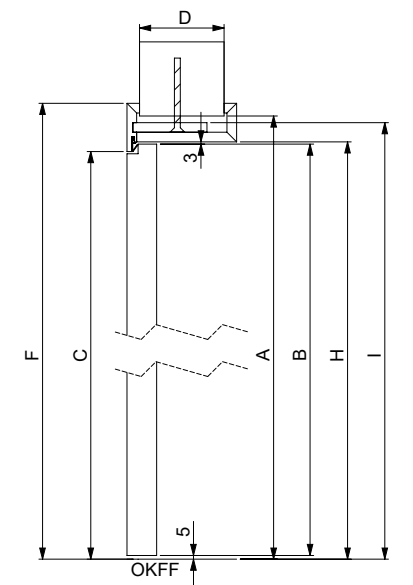
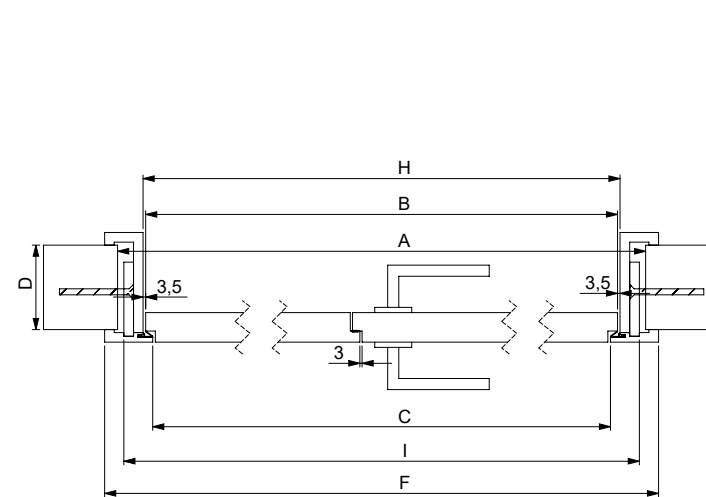
| | A | | B | | H | | F | | I | | C | | | | | | | |
|-------|-------------------------|---|----------------|--------|------------------------|-------|-----------------------|---|----------------------------|--------|---------------------|-------|--|--|------|--|--|------|
| | Structural wall opening | | Door dimension | | Frame rebate dimension | | Frame outer dimension | | Frame outer edge dimension | | Clearance dimension | | | | | | | |
| Width | + 76 mm | | 0 | | + 7 mm | | + 111 mm | | + 66 mm | | - 19 mm | | | | | | | |
| | Height | x | Width | Height | x | Width | Height | x | Width | Height | x | Width | | | | | | |
| | | | 1510 | | | 1434 | | | 1441 | | | 1545 | | | 1500 | | | 1415 |
| | | | 1760 | | | 1684 | | | 1691 | | | 1795 | | | 1750 | | | 1665 |
| | | | 2010 | | | 1934 | | | 1941 | | | 2045 | | | 2000 | | | 1915 |

| | + 43 mm | | 0 | | + 8 mm | | + 60 mm | | + 34 mm | | - 5 mm | |
|------|---------|------|------|------|--------|------|---------|------|---------|------|--------|------|
| | Height | 2058 | | 2015 | | 2023 | | 2075 | | 2049 | | 2010 |
| 2158 | | | 2115 | | 2123 | | 2175 | | 2149 | | 2110 | |
| 2265 | | | 2222 | | 2230 | | 2282 | | 2256 | | 2217 | |
| 2390 | | | 2347 | | 2355 | | 2407 | | 2381 | | 2342 | |
| 2515 | | | 2472 | | 2480 | | 2532 | | 2506 | | 2467 | |
| 2640 | | | 2597 | | 2605 | | 2657 | | 2631 | | 2592 | |
| 2765 | | | 2722 | | 2730 | | 2782 | | 2756 | | 2717 | |
| 2890 | | | 2847 | | 2855 | | 2907 | | 2881 | | 2842 | |
| 3015 | | | 2972 | | 2980 | | 3032 | | 3006 | | 2967 | |

* 2 x 722 mm
* 2 x 847 mm
* 2 x 972 mm

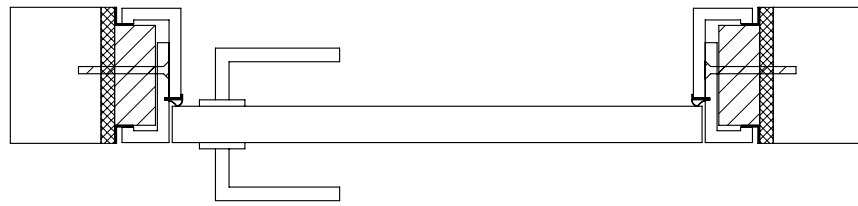
Finished wall thickness min. 65 mm

Installation space: Width 2 x 5 = 10 mm Top 9 mm



OKFF = Oberkante Fertig Fußboden
Top finished floor

Cube flush 6 mm shadow gap



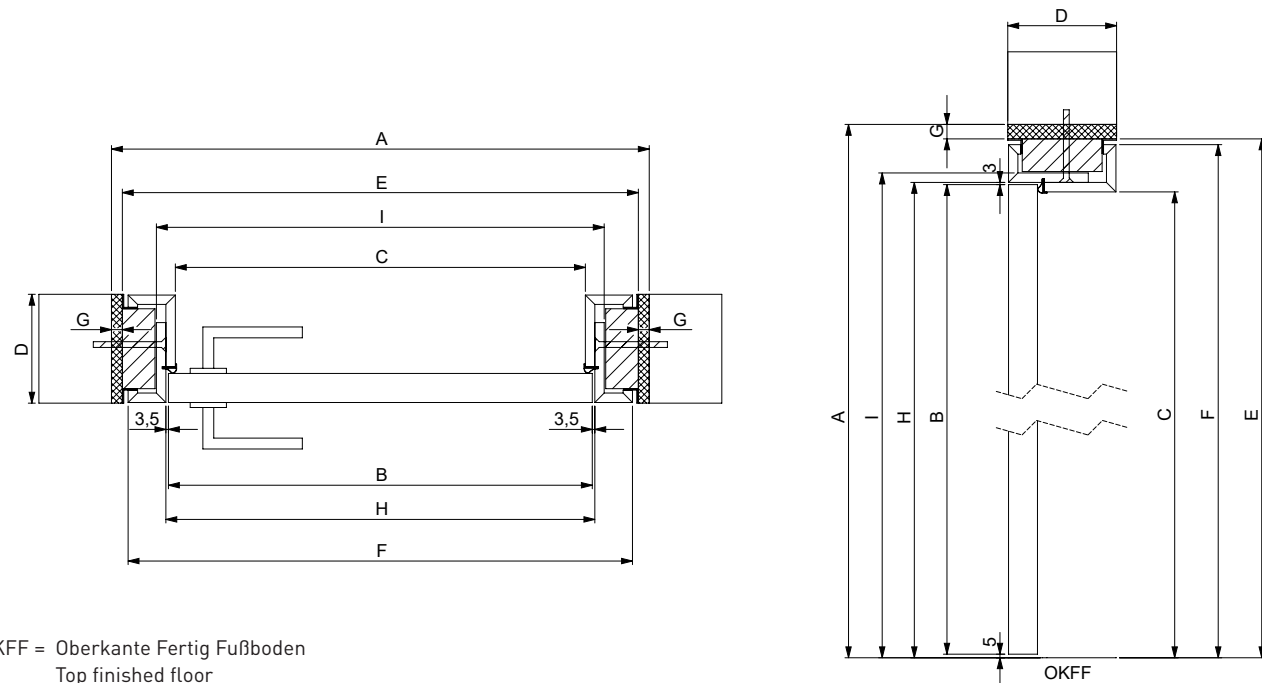
Single door

In the dimension table, the outer dimension of the door leaf is the basic dimension.
 Calculation tool can be found at <https://www.bodor.eu/producten/cube-flush-with-the-wall-6mm>

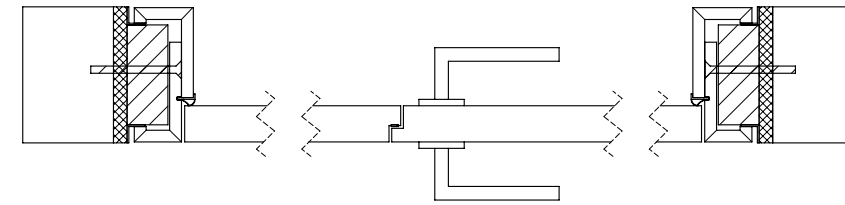
| | A | | E | | B | | H | | F | | I | | C | | |
|-------|-------------------------|------|--------------------------|--------|----------------|-------|------------------------|------|-----------------------|--------|----------------------------|-------|---------------------|------|-------|
| | Structural wall opening | | Subframe outer dimension | | Door dimension | | Frame rebate dimension | | Frame outer dimension | | Frame outer edge dimension | | Clearance dimension | | |
| Width | + 147 mm | | + 127 mm | | 0 | | + 7 mm | | + 111 mm | | + 32 mm | | - 19 mm | | |
| | Height | x | Width | Height | x | Width | Height | x | Width | Height | x | Width | Height | x | Width |
| | | | 731 | | | 711 | | | 584 | | | 591 | | | 695 |
| | | | 856 | | | 836 | | | 709 | | | 716 | | | 820 |
| | | | 981 | | | 961 | | | 834 | | | 841 | | | 945 |
| | | | 1106 | | | 1086 | | | 959 | | | 966 | | | 1070 |
| | | | 1231 | | | 1211 | | | 1084 | | | 1091 | | | 1195 |
| | | 1356 | | | 1336 | | | 1209 | | | 1216 | | | 1320 | |

| | + 78 mm | | + 68 mm | | 0 | | + 8 mm | | + 60 mm | | + 20 mm | | - 5 mm | |
|------|----------------|------|----------------|------|----------|------|---------------|------|----------------|------|----------------|------|---------------|------|
| | Height | 2093 | | 2083 | | 2015 | | 2023 | | 2075 | | 2035 | | 2010 |
| 2193 | | | 2183 | | 2115 | | 2123 | | 2175 | | 2135 | | 2110 | |
| 2300 | | | 2290 | | 2222 | | 2230 | | 2282 | | 2242 | | 2217 | |
| 2425 | | | 2415 | | 2347 | | 2355 | | 2407 | | 2367 | | 2342 | |
| 2550 | | | 2540 | | 2472 | | 2480 | | 2532 | | 2492 | | 2467 | |
| 2675 | | | 2665 | | 2597 | | 2605 | | 2657 | | 2617 | | 2592 | |
| 2800 | | | 2790 | | 2722 | | 2730 | | 2782 | | 2742 | | 2717 | |
| 2925 | | | 2915 | | 2847 | | 2855 | | 2907 | | 2867 | | 2842 | |
| 3050 | | | 3040 | | 2972 | | 2980 | | 3032 | | 2992 | | 2967 | |

Dimensions based on:
 Installation space width: 2 x 10 mm = 20 mm Finished wall thickness min. 100 mm
 Installation space top: 10 mm



OKFF = Oberkante Fertig Fußboden
 Top finished floor



Double door

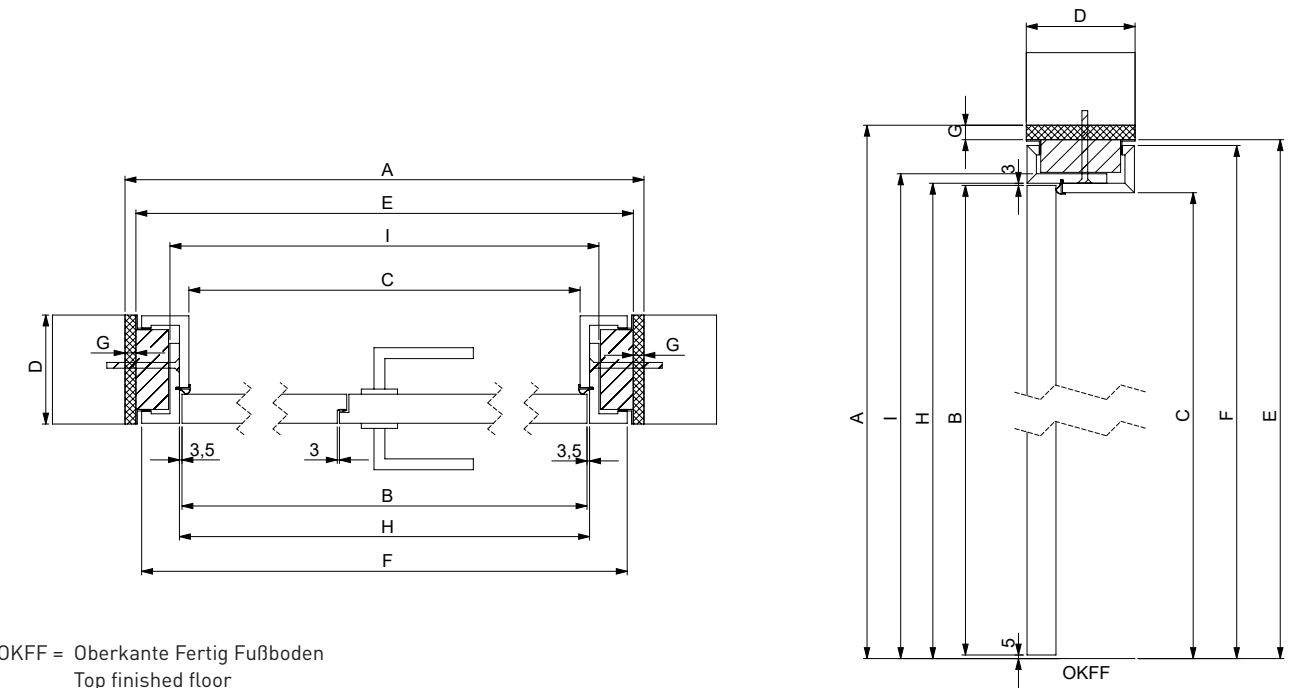
In the dimension table, the outer dimension of the door leaf is the basic dimension.
 Calculation tool can be found at <https://www.bodor.eu/producten/cube-flush-with-the-wall-6mm>

| | A | | E | | B | | H | | F | | I | | C | | |
|-------|-------------------------|---|--------------------------|--------|----------------|-------|------------------------|---|-----------------------|--------|----------------------------|-------|---------------------|---|-------|
| | Structural wall opening | | Subframe outer dimension | | Door dimension | | Frame rebate dimension | | Frame outer dimension | | Frame outer edge dimension | | Clearance dimension | | |
| Width | + 147 mm | | + 127 mm | | 0 | | + 7 mm | | + 111 mm | | + 32 mm | | - 19 mm | | |
| | Height | x | Width | Height | x | Width | Height | x | Width | Height | x | Width | Height | x | Width |
| | | | 1581 | | | 1561 | | | 1434 | | | 1441 | | | 1545 |
| | | | 1831 | | | 1811 | | | 1684 | | | 1691 | | | 1795 |
| | | | 2081 | | | 2061 | | | 1934 | | | 1941 | | | 2045 |

| | + 78 mm | | + 68 mm | | 0 | | + 8 mm | | + 60 mm | | + 20 mm | | - 5 mm | |
|------|----------------|------|----------------|------|----------|------|---------------|------|----------------|------|----------------|------|---------------|------|
| | Height | 2093 | | 2083 | | 2015 | | 2023 | | 2075 | | 2035 | | 2010 |
| 2193 | | | 2183 | | 2115 | | 2123 | | 2175 | | 2135 | | 2110 | |
| 2300 | | | 2290 | | 2222 | | 2230 | | 2282 | | 2242 | | 2217 | |
| 2425 | | | 2415 | | 2347 | | 2355 | | 2407 | | 2367 | | 2342 | |
| 2550 | | | 2540 | | 2472 | | 2480 | | 2532 | | 2492 | | 2467 | |
| 2675 | | | 2665 | | 2597 | | 2605 | | 2657 | | 2617 | | 2592 | |
| 2800 | | | 2790 | | 2722 | | 2730 | | 2782 | | 2742 | | 2717 | |
| 2925 | | | 2915 | | 2847 | | 2855 | | 2907 | | 2867 | | 2842 | |
| 3050 | | | 3040 | | 2972 | | 2980 | | 3032 | | 2992 | | 2967 | |

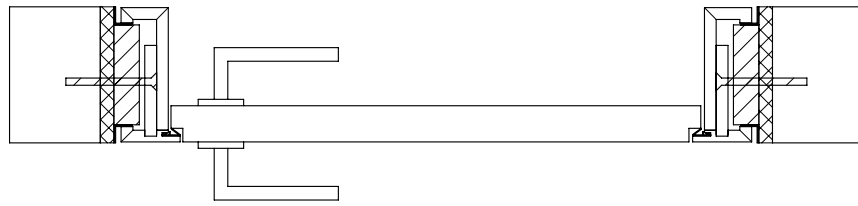
* 2 x 722 mm
 * 2 x 847 mm
 * 2 x 972 mm

Dimensions based on:
 Installation space width: 2 x 10 mm = 20 mm Finished wall thickness min. 100 mm
 Installation space top: 10 mm



OKFF = Oberkante Fertig Fußboden
 Top finished floor

RE-Cube flush 6 mm shadow gap



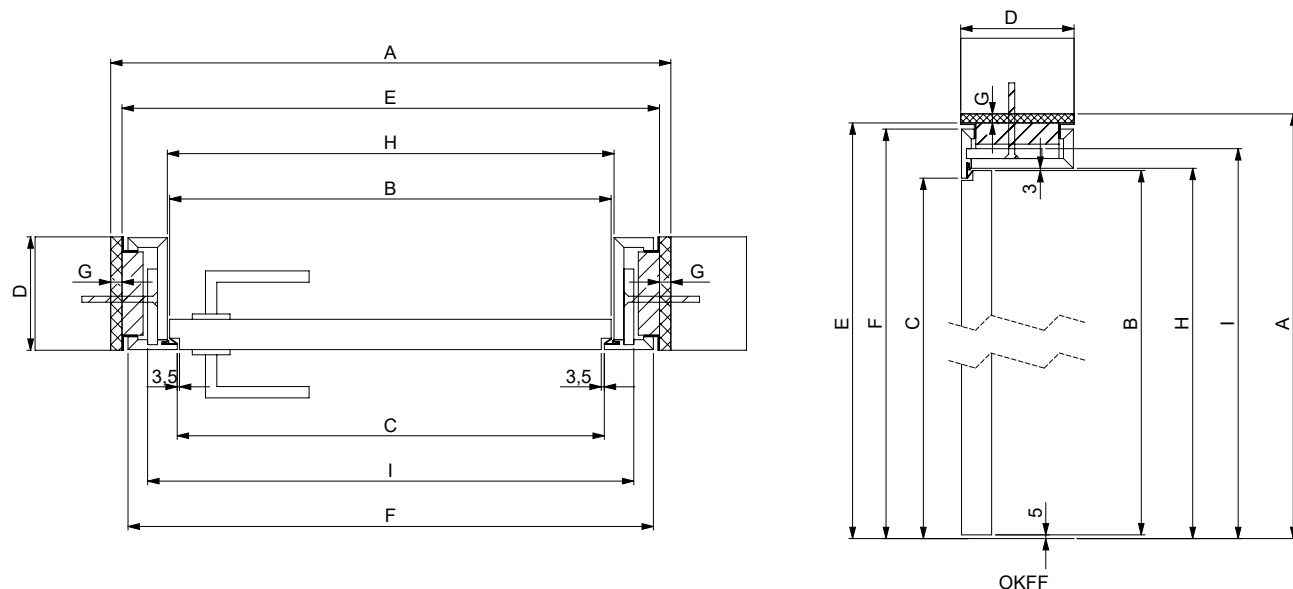
Single door

In the dimension table, the outer dimension of the door leaf is the basic dimension.
 Calculation tool can be found at <https://www.bodor.eu/producten/re-cube-flush-with-the-wall-6mm>

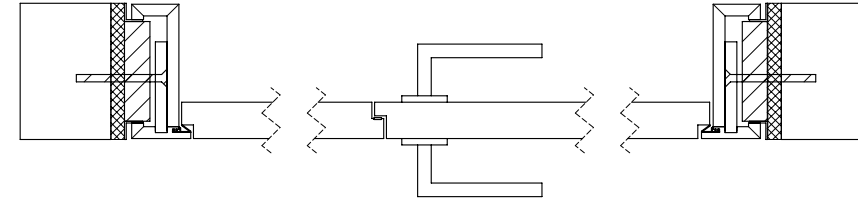
| | A | | E | | B | | H | | F | | I | | C | | |
|-------|-------------------------|------|--------------------------|--------|----------------|-------|------------------------|------|-----------------------|--------|----------------------------|-------|---------------------|------|-------|
| | Structural wall opening | | Subframe outer dimension | | Door dimension | | Frame rebate dimension | | Frame outer dimension | | Frame outer edge dimension | | Clearance dimension | | |
| Width | + 147 mm | | + 127 mm | | 0 | | + 7 mm | | + 111 mm | | + 66 mm | | - 19 mm | | |
| | Height | x | Width | Height | x | Width | Height | x | Width | Height | x | Width | Height | x | Width |
| | | | 731 | | | 711 | | | 584 | | | 591 | | | 695 |
| | | | 856 | | | 836 | | | 709 | | | 716 | | | 820 |
| | | | 981 | | | 961 | | | 834 | | | 841 | | | 945 |
| | | | 1106 | | | 1086 | | | 959 | | | 966 | | | 1070 |
| | | | 1231 | | | 1211 | | | 1084 | | | 1091 | | | 1195 |
| | | 1356 | | | 1336 | | | 1209 | | | 1216 | | | 1320 | |

| | + 78 mm | | + 68 mm | | 0 | | + 8 mm | | + 60 mm | | + 34 mm | | - 5 mm | | |
|--|---------|--|---------|------|---|------|--------|--|---------|------|---------|------|--------|--|------|
| | Height | | | 2093 | | | 2083 | | | 2015 | | | 2023 | | |
| | | | 2193 | | | 2183 | | | 2115 | | | 2123 | | | 2175 |
| | | | 2300 | | | 2290 | | | 2222 | | | 2230 | | | 2282 |
| | | | 2425 | | | 2415 | | | 2347 | | | 2355 | | | 2407 |
| | | | 2550 | | | 2540 | | | 2472 | | | 2480 | | | 2532 |
| | | | 2675 | | | 2665 | | | 2597 | | | 2605 | | | 2657 |
| | | | 2800 | | | 2790 | | | 2722 | | | 2730 | | | 2782 |
| | | | 2925 | | | 2915 | | | 2847 | | | 2855 | | | 2907 |
| | | | 3050 | | | 3040 | | | 2972 | | | 2980 | | | 3032 |

Dimensions based on:
 Installation space width: 2 x 10 mm = 20 mm Finished wall thickness min. 100 mm
 Installation space top: 10 mm



OKFF = Oberkante Fertig Fußboden
 Top finished floor



Double door

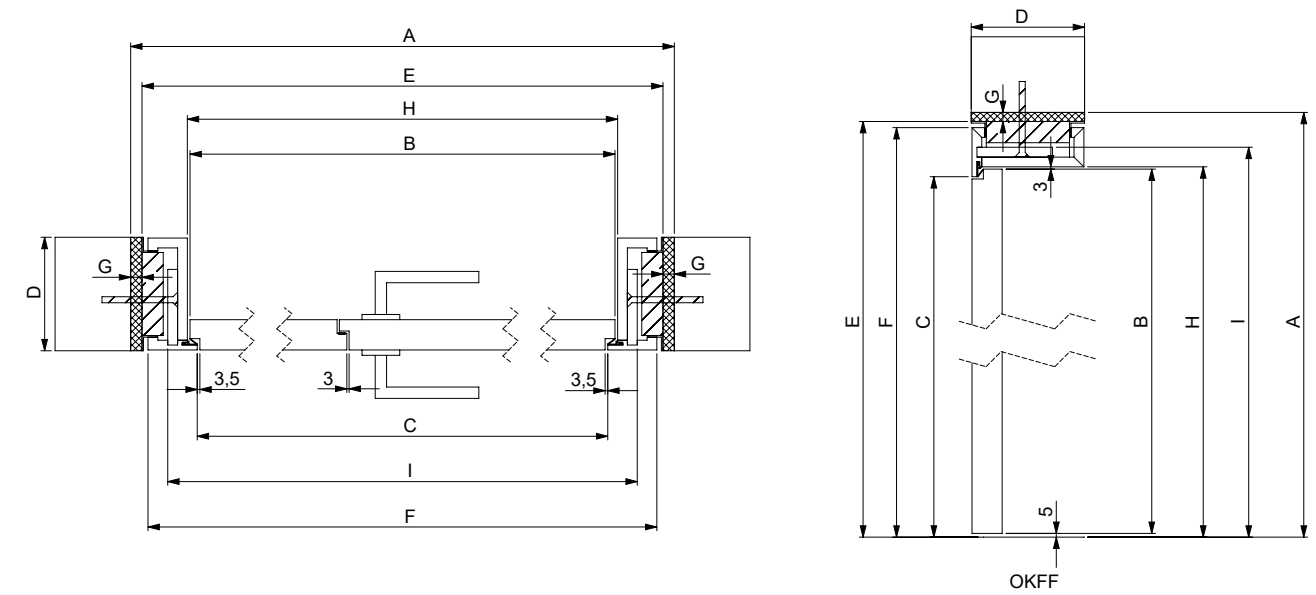
In the dimension table, the outer dimension of the door leaf is the basic dimension.
 Calculation tool can be found at <https://www.bodor.eu/producten/re-cube-flush-with-the-wall-6mm>

| | A | | E | | B | | H | | F | | I | | C | | |
|-------|-------------------------|---|--------------------------|--------|----------------|-------|------------------------|---|-----------------------|--------|----------------------------|-------|---------------------|---|-------|
| | Structural wall opening | | Subframe outer dimension | | Door dimension | | Frame rebate dimension | | Frame outer dimension | | Frame outer edge dimension | | Clearance dimension | | |
| Width | + 147 mm | | + 127 mm | | 0 | | + 7 mm | | + 111 mm | | + 66 mm | | - 19 mm | | |
| | Height | x | Width | Height | x | Width | Height | x | Width | Height | x | Width | Height | x | Width |
| | | | 1581 | | | 1561 | | | 1434 | | | 1441 | | | 1545 |
| | | | 1831 | | | 1811 | | | 1684 | | | 1691 | | | 1795 |
| | | | 2081 | | | 2061 | | | 1934 | | | 1941 | | | 2045 |

| | + 78 mm | | + 68 mm | | 0 | | + 8 mm | | + 60 mm | | + 34 mm | | - 5 mm | | |
|--|---------|--|---------|------|---|------|--------|--|---------|------|---------|------|--------|--|------|
| | Height | | | 2093 | | | 2083 | | | 2015 | | | 2023 | | |
| | | | 2193 | | | 2183 | | | 2115 | | | 2123 | | | 2175 |
| | | | 2300 | | | 2290 | | | 2222 | | | 2230 | | | 2282 |
| | | | 2425 | | | 2415 | | | 2347 | | | 2355 | | | 2407 |
| | | | 2550 | | | 2540 | | | 2472 | | | 2480 | | | 2532 |
| | | | 2675 | | | 2665 | | | 2597 | | | 2605 | | | 2657 |
| | | | 2800 | | | 2790 | | | 2722 | | | 2730 | | | 2782 |
| | | | 2925 | | | 2915 | | | 2847 | | | 2855 | | | 2907 |
| | | | 3050 | | | 3040 | | | 2972 | | | 2980 | | | 3032 |

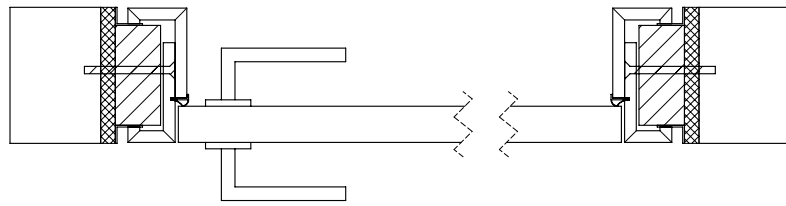
* 2 x 722 mm
 * 2 x 847 mm
 * 2 x 972 mm

Dimensions based on:
 Installation space width: 2 x 10 mm = 20 mm Finished wall thickness min. 100 mm
 Installation space top: 10 mm



OKFF = Oberkante Fertig Fußboden
 Top finished floor

Cube flush 12 mm shadow gap



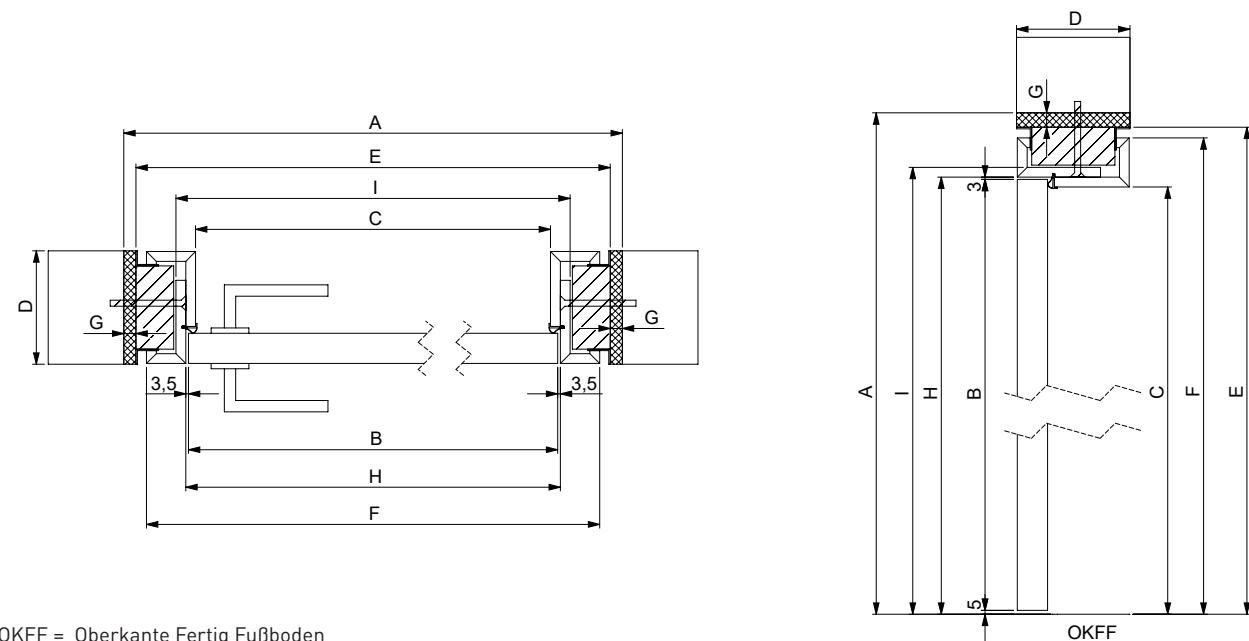
Single door

In the dimension table, the outer dimension of the door leaf is the basic dimension.
 Calculation tool can be found at <https://www.bodor.eu/producten/cube-flush-with-the-wall-12-mm>

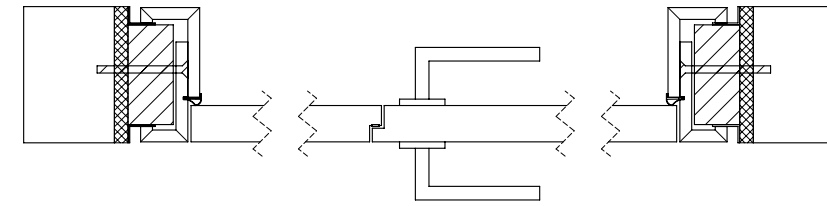
| | A | | E | | B | | H | | F | | I | | C | | |
|-------|-------------------------|------|--------------------------|--------|----------------|-------|------------------------|------|-----------------------|--------|----------------------------|-------|---------------------|------|-------|
| | Structural wall opening | | Subframe outer dimension | | Door dimension | | Frame rebate dimension | | Frame outer dimension | | Frame outer edge dimension | | Clearance dimension | | |
| | + 161 mm | | + 139 mm | | 0 | | + 7 mm | | + 111 mm | | + 32 mm | | - 19 mm | | |
| Width | Height | x | Width | Height | x | Width | Height | x | Width | Height | x | Width | Height | x | Width |
| | | 745 | | 723 | | 584 | | 591 | | 695 | | 616 | | 565 | |
| | | 870 | | 848 | | 709 | | 716 | | 820 | | 741 | | 690 | |
| | | 995 | | 973 | | 834 | | 841 | | 945 | | 866 | | 815 | |
| | | 1120 | | 1098 | | 959 | | 966 | | 1070 | | 991 | | 940 | |
| | | 1245 | | 1223 | | 1084 | | 1091 | | 1195 | | 1116 | | 1065 | |
| | 1370 | | 1348 | | 1209 | | 1216 | | 1320 | | 1241 | | 1190 | | |

| Height | + 84 mm | + 74 mm | 0 | + 8 mm | + 60 mm | + 20 mm | - 5 mm |
|--------|---------|---------|------|--------|---------|---------|--------|
| | 2099 | 2089 | 2015 | 2023 | 2075 | 2035 | 2010 |
| 2199 | 2189 | 2115 | 2123 | 2175 | 2135 | 2110 | |
| 2306 | 2296 | 2222 | 2230 | 2282 | 2242 | 2217 | |
| 2431 | 2421 | 2347 | 2355 | 2407 | 2367 | 2342 | |
| 2556 | 2546 | 2472 | 2480 | 2532 | 2492 | 2467 | |
| 2681 | 2671 | 2597 | 2605 | 2657 | 2617 | 2592 | |
| 2806 | 2796 | 2722 | 2730 | 2782 | 2742 | 2717 | |
| 2931 | 2921 | 2847 | 2855 | 2907 | 2867 | 2842 | |
| 3056 | 3046 | 2972 | 2980 | 3032 | 2992 | 2967 | |

Dimensions based on:
 Installation space width: 2 x 10 mm = 20 mm Finished wall thickness min. 100 mm
 Installation space top: 10 mm



OKFF = Oberkante Fertig Fußboden
 Top finished floor



Double door

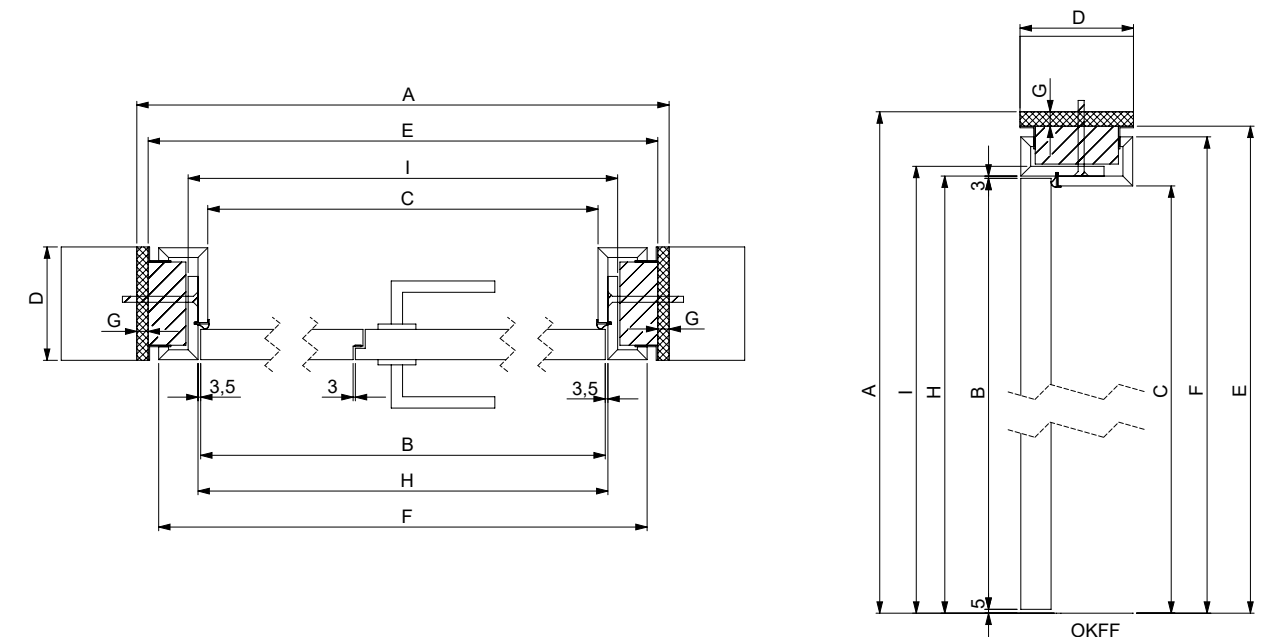
In the dimension table, the outer dimension of the door leaf is the basic dimension.
 Calculation tool can be found at <https://www.bodor.eu/producten/cube-flush-with-the-wall-12-mm>

| | A | | E | | B | | H | | F | | I | | C | | |
|-------|-------------------------|------|--------------------------|--------|----------------|-------|------------------------|------|-----------------------|--------|----------------------------|-------|---------------------|------|-------|
| | Structural wall opening | | Subframe outer dimension | | Door dimension | | Frame rebate dimension | | Frame outer dimension | | Frame outer edge dimension | | Clearance dimension | | |
| | + 161 mm | | + 139 mm | | 0 | | + 7 mm | | + 111 mm | | + 32 mm | | - 19 mm | | |
| Width | Height | x | Width | Height | x | Width | Height | x | Width | Height | x | Width | Height | x | Width |
| | | 1595 | | 1573 | | 1434 | | 1441 | | 1545 | | 1466 | | 1415 | |
| | | 1845 | | 1823 | | 1684 | | 1691 | | 1795 | | 1716 | | 1665 | |
| | | 2095 | | 2073 | | 1934 | | 1941 | | 2045 | | 1966 | | 1915 | |

| Height | + 84 mm | + 74 mm | 0 | + 8 mm | + 60 mm | + 20 mm | - 5 mm |
|--------|---------|---------|------|--------|---------|---------|--------|
| | 2099 | 2089 | 2015 | 2023 | 2075 | 2035 | 2010 |
| 2199 | 2189 | 2115 | 2123 | 2175 | 2135 | 2110 | |
| 2306 | 2296 | 2222 | 2230 | 2282 | 2242 | 2217 | |
| 2431 | 2421 | 2347 | 2355 | 2407 | 2367 | 2342 | |
| 2556 | 2546 | 2472 | 2480 | 2532 | 2492 | 2467 | |
| 2681 | 2671 | 2597 | 2605 | 2657 | 2617 | 2592 | |
| 2806 | 2796 | 2722 | 2730 | 2782 | 2742 | 2717 | |
| 2931 | 2921 | 2847 | 2855 | 2907 | 2867 | 2842 | |
| 3056 | 3046 | 2972 | 2980 | 3032 | 2992 | 2967 | |

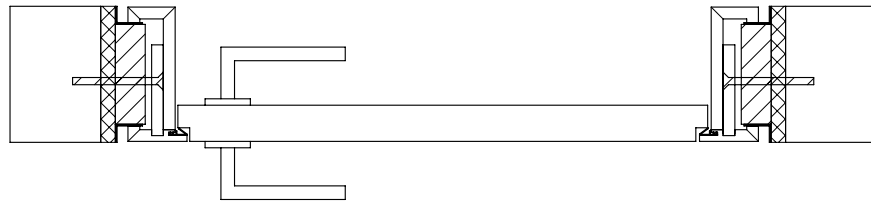
* 2 x 722 mm
 * 2 x 847 mm
 * 2 x 972 mm

Dimensions based on:
 Installation space width: 2 x 10 mm = 20 mm Finished wall thickness min. 100 mm
 Installation space top: 10 mm



OKFF = Oberkante Fertig Fußboden
 Top finished floor

RE-Cube flush 12 mm shadow gap



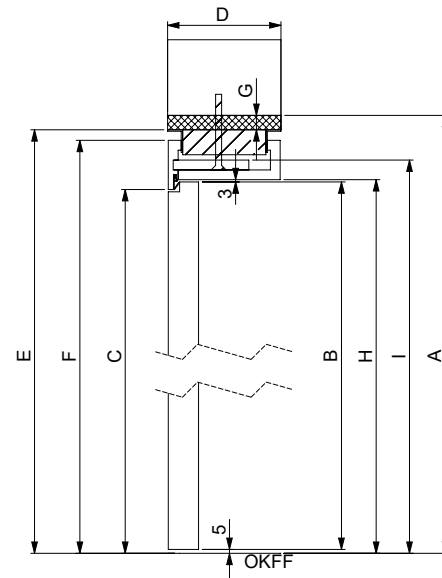
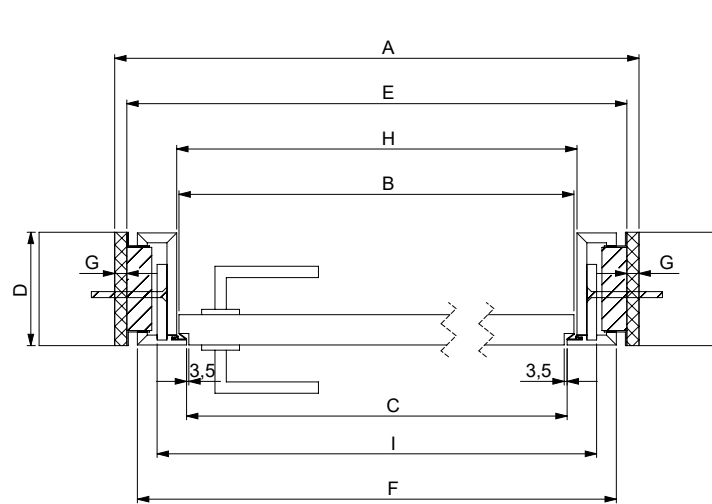
Single door

In the dimension table, the outer dimension of the door leaf is the basic dimension.
 Calculation tool can be found at <https://www.bodor.eu/producten/re-cube-wandbuendig-12mm>

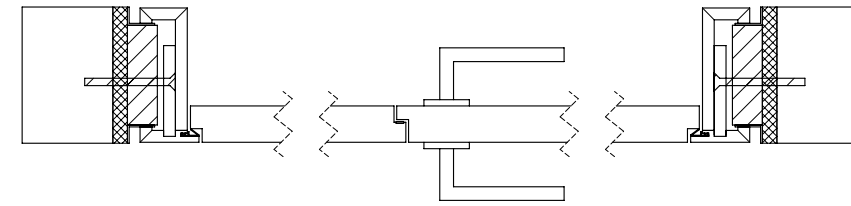
| | A | E | B | H | F | I | C |
|-------|-------------------------|--------------------------|----------------|------------------------|-----------------------|----------------------------|---------------------|
| | Structural wall opening | Subframe outer dimension | Door dimension | Frame rebate dimension | Frame outer dimension | Frame outer edge dimension | Clearance dimension |
| | + 161 mm | + 139 mm | 0 | + 7 mm | + 111 mm | + 66 mm | - 19 mm |
| Width | Height x Width | Height x Width | Height x Width | Height x Width | Height x Width | Height x Width | Height x Width |
| | 745 | 723 | 584 | 591 | 695 | 650 | 565 |
| | 870 | 848 | 709 | 716 | 820 | 775 | 690 |
| | 995 | 973 | 834 | 841 | 945 | 900 | 815 |
| | 1120 | 1098 | 959 | 966 | 1070 | 1025 | 940 |
| | 1245 | 1223 | 1084 | 1091 | 1195 | 1150 | 1065 |
| | 1370 | 1348 | 1209 | 1216 | 1320 | 1275 | 1190 |

| | | | | | | | |
|--------|---------|---------|------|--------|---------|---------|--------|
| Height | + 83 mm | + 74 mm | 0 | + 8 mm | + 60 mm | + 34 mm | - 5 mm |
| | 2098 | 2089 | 2015 | 2023 | 2075 | 2049 | 2010 |
| | 2198 | 2189 | 2115 | 2123 | 2175 | 2149 | 2110 |
| | 2305 | 2296 | 2222 | 2230 | 2282 | 2256 | 2217 |
| | 2430 | 2421 | 2347 | 2355 | 2407 | 2381 | 2342 |
| | 2555 | 2546 | 2472 | 2480 | 2532 | 2506 | 2467 |
| | 2680 | 2671 | 2597 | 2605 | 2657 | 2631 | 2592 |
| | 2805 | 2796 | 2722 | 2730 | 2782 | 2756 | 2717 |
| | 2930 | 2921 | 2847 | 2855 | 2907 | 2881 | 2842 |
| | 3055 | 3046 | 2972 | 2980 | 3032 | 3006 | 2967 |

Dimensions based on:
 Installation space width: 2 x 9 mm = 18 mm Finished wall thickness min. 100 mm
 Installation space top: 10 mm



OKFF = Oberkante Fertig Fußboden
 Top finished floor



Double door

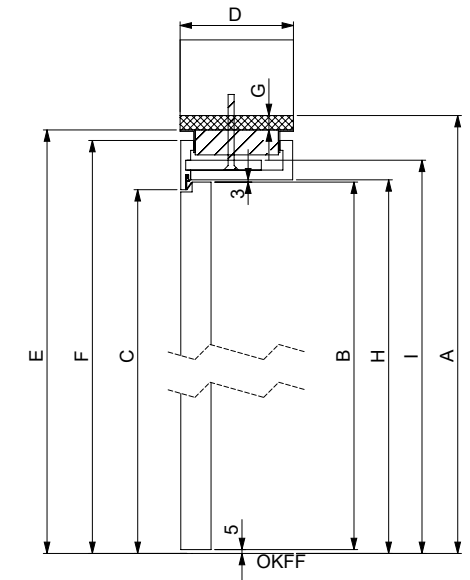
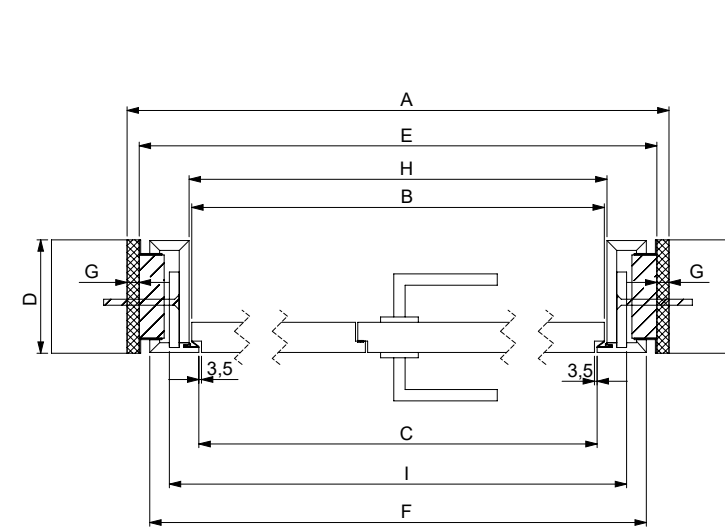
In the dimension table, the outer dimension of the door leaf is the basic dimension.
 Calculation tool can be found at <https://www.bodor.eu/producten/re-cube-wandbuendig-12mm>

| | A | E | B | H | F | I | C |
|-------|-------------------------|--------------------------|----------------|------------------------|-----------------------|----------------------------|---------------------|
| | Structural wall opening | Subframe outer dimension | Door dimension | Frame rebate dimension | Frame outer dimension | Frame outer edge dimension | Clearance dimension |
| | + 161 mm | + 139 mm | 0 | + 7 mm | + 111 mm | + 66 mm | - 19 mm |
| Width | Height x Width | Height x Width | Height x Width | Height x Width | Height x Width | Height x Width | Height x Width |
| | 1595 | 1573 | 1434 | 1441 | 1545 | 1500 | 1415 |
| | 1845 | 1823 | 1684 | 1691 | 1795 | 1750 | 1665 |
| | 2095 | 2073 | 1934 | 1941 | 2045 | 2000 | 1915 |

| | | | | | | | |
|--------|---------|---------|------|--------|---------|---------|--------|
| Height | + 83 mm | + 74 mm | 0 | + 8 mm | + 60 mm | + 34 mm | - 5 mm |
| | 2098 | 2089 | 2015 | 2023 | 2075 | 2049 | 2010 |
| | 2198 | 2189 | 2115 | 2123 | 2175 | 2149 | 2110 |
| | 2305 | 2296 | 2222 | 2230 | 2282 | 2256 | 2217 |
| | 2430 | 2421 | 2347 | 2355 | 2407 | 2381 | 2342 |
| | 2555 | 2546 | 2472 | 2480 | 2532 | 2506 | 2467 |
| | 2680 | 2671 | 2597 | 2605 | 2657 | 2631 | 2592 |
| | 2805 | 2796 | 2722 | 2730 | 2782 | 2756 | 2717 |
| | 2930 | 2921 | 2847 | 2855 | 2907 | 2881 | 2842 |
| | 3055 | 3046 | 2972 | 2980 | 3032 | 3006 | 2967 |

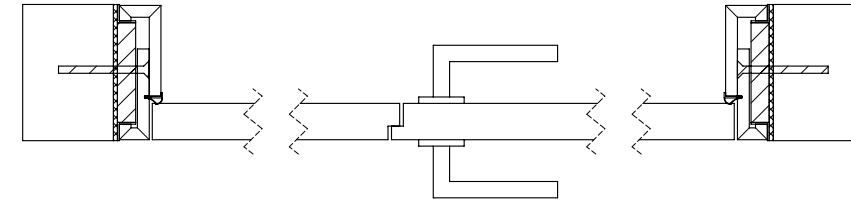
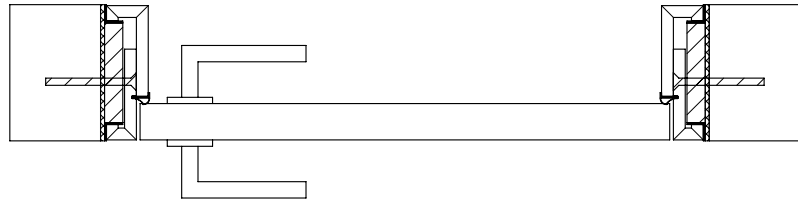
* 2 x 722 mm
 * 2 x 847 mm
 * 2 x 972 mm

Dimensions based on:
 Installation space width: 2 x 9 mm = 18 mm Finished wall thickness min. 100 mm
 Installation space top: 10 mm



OKFF = Oberkante Fertig Fußboden
 Top finished floor

Cube SF



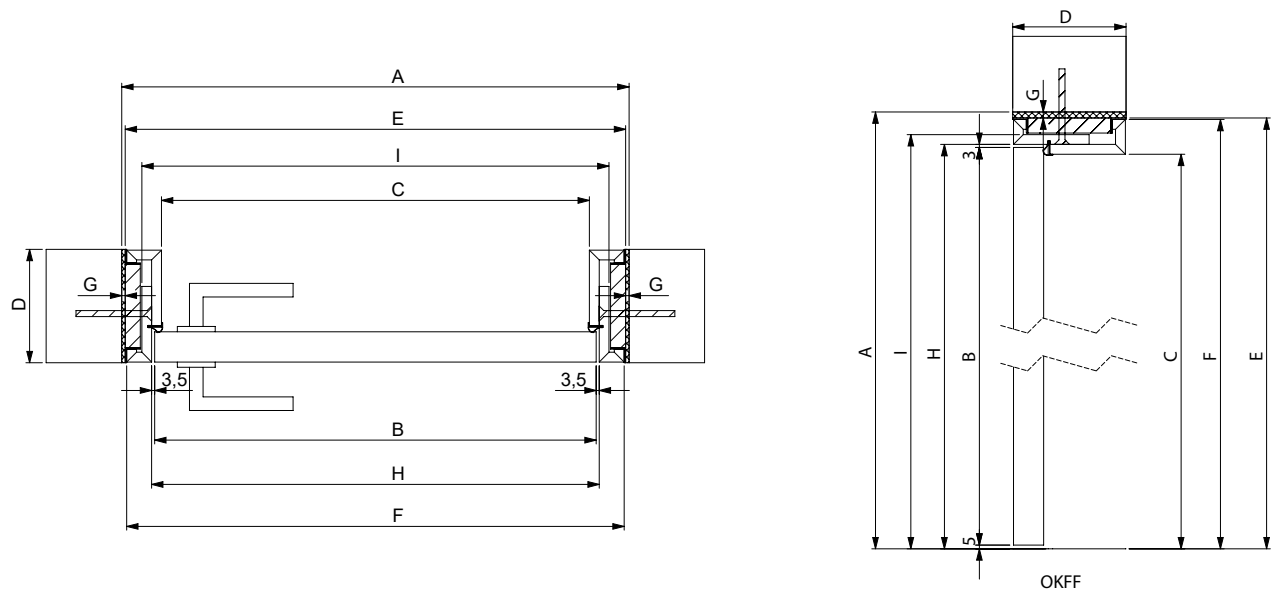
Single door

In the dimension table, the outer dimension of the door leaf is the basic dimension.
 Calculation tool can be found at <https://www.bodor.eu/producten/cube-flush-with-the-wall-slim-frame>

| | A | E | B | H | F | I | C |
|-------|-------------------------|--------------------------|----------------|------------------------|-----------------------|----------------------------|---------------------|
| | Structural wall opening | Subframe outer dimension | Door dimension | Frame rebate dimension | Frame outer dimension | Frame outer edge dimension | Clearance dimension |
| | + 87 mm | + 78 mm | 0 | + 7 mm | + 73 mm | + 32 mm | - 19 mm |
| Width | Height x Width | Height x Width | Height x Width | Height x Width | Height x Width | Height x Width | Height x Width |
| | 635 x 760 | 626 x 751 | 548 x 673 | 555 x 680 | 621 x 746 | 580 x 705 | 529 x 654 |
| | 885 x 1010 | 876 x 1001 | 798 x 923 | 805 x 930 | 871 x 996 | 830 x 955 | 779 x 904 |
| | 1135 x 1260 | 1126 x 1251 | 1048 x 1173 | 1055 x 1180 | 1121 x 1246 | 1080 x 1205 | 1029 x 1154 |

| | | | | | | | |
|--------|----------------|----------------|----------|---------------|----------------|----------------|---------------|
| Height | + 53 mm | + 44 mm | 0 | + 8 mm | + 41 mm | + 20 mm | - 4 mm |
| | 2010 | 2001 | 1957 | 1965 | 1998 | 1977 | 1953 |
| | 2135 | 2126 | 2082 | 2090 | 2123 | 2102 | 2078 |
| | 2260 | 2251 | 2207 | 2215 | 2248 | 2227 | 2203 |
| | 2385 | 2376 | 2332 | 2340 | 2373 | 2352 | 2328 |
| | 2510 | 2501 | 2457 | 2465 | 2498 | 2477 | 2453 |
| | 2635 | 2626 | 2582 | 2590 | 2623 | 2602 | 2578 |
| | 2760 | 2751 | 2707 | 2715 | 2748 | 2727 | 2703 |
| | 2885 | 2876 | 2832 | 2840 | 2873 | 2852 | 2828 |
| | 3010 | 3001 | 2957 | 2965 | 2998 | 2977 | 2953 |

Dimensions based on:
 Installation space width: 2 x 4 mm = 8 mm Finished wall thickness min. 100 mm
 Installation space top: 9 mm



OKFF = Oberkante Fertig Fußboden
 Top finished floor

Double door

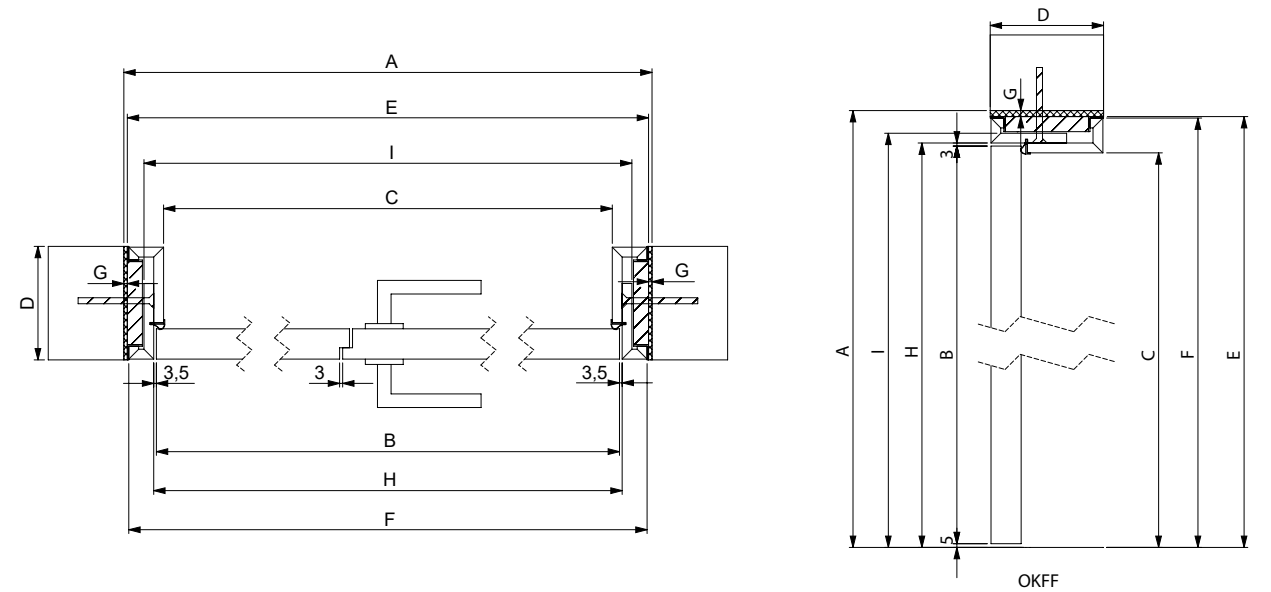
In the dimension table, the outer dimension of the door leaf is the basic dimension.
 Calculation tool can be found at <https://www.bodor.eu/producten/cube-flush-with-the-wall-slim-frame>

| | A | E | B | H | F | I | C |
|-------|-------------------------|--------------------------|----------------|------------------------|-----------------------|----------------------------|---------------------|
| | Structural wall opening | Subframe outer dimension | Door dimension | Frame rebate dimension | Frame outer dimension | Frame outer edge dimension | Clearance dimension |
| | + 88 mm | + 78 mm | 0 | + 7 mm | + 73 mm | + 32 mm | - 19 mm |
| Width | Height x Width | Height x Width | Height x Width | Height x Width | Height x Width | Height x Width | Height x Width |
| | 1500 x 1750 | 1490 x 1740 | 1412 x 1662 | 1441 x 1691 | 1545 x 1795 | 1500 x 1750 | 1415 x 1665 |
| | 2000 | 1990 | 1912 | 1941 | 2045 | 2000 | 1915 |

| | | | | | | | |
|--------|----------------|----------------|----------|---------------|----------------|----------------|---------------|
| Height | + 53 mm | + 44 mm | 0 | + 8 mm | + 41 mm | + 20 mm | - 4 mm |
| | 2010 | 2001 | 1957 | 1965 | 1998 | 1977 | 1953 |
| | 2135 | 2126 | 2082 | 2090 | 2123 | 2102 | 2078 |
| | 2260 | 2251 | 2207 | 2215 | 2248 | 2227 | 2203 |
| | 2385 | 2376 | 2332 | 2340 | 2373 | 2352 | 2328 |
| | 2510 | 2501 | 2457 | 2465 | 2498 | 2477 | 2453 |
| | 2635 | 2626 | 2582 | 2590 | 2623 | 2602 | 2578 |
| | 2760 | 2751 | 2707 | 2715 | 2748 | 2727 | 2703 |
| | 2885 | 2876 | 2832 | 2840 | 2873 | 2852 | 2828 |
| | 3010 | 3001 | 2957 | 2965 | 2998 | 2977 | 2953 |

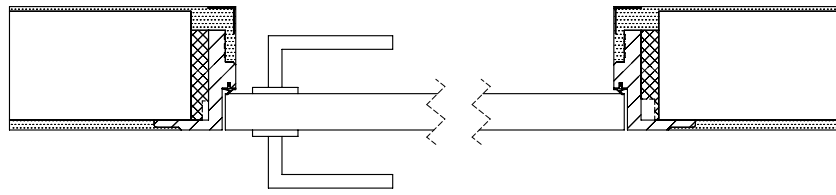
* 2 x 722 mm
 * 2 x 847 mm
 * 2 x 972 mm

Dimensions based on:
 Installation space width: 2 x 4 mm = 8 mm Finished wall thickness min. 100 mm
 Installation space top: 9 mm



OKFF = Oberkante Fertig Fußboden
 Top finished floor

Under-Cover Doorframes



Single door

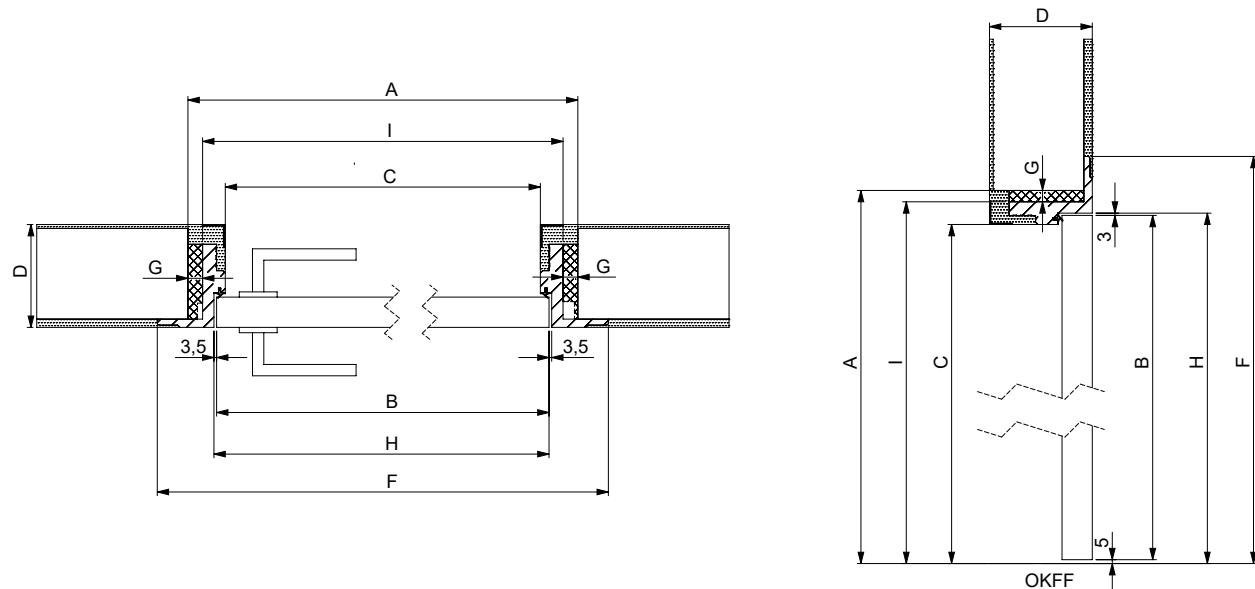
In the dimension table, the outer dimension of the door leaf is the basic dimension.
Calculation tool can be found at <https://www.bodor.eu/producten/under-cover-doorframes>

| | A | | | B | | | H | | | F | | | I | | | C | | |
|-------|-------------------------|------|-------|----------------|------|-------|----------------|------|-------|-----------------------|------|-------|----------------------------|------|-------|---------------------|------|-------|
| | Structural wall opening | | | Door dimension | | | UC rebate size | | | Frame outer dimension | | | Frame outer edge dimension | | | Clearance dimension | | |
| Width | + 76 mm | | | 0 | | | + 7 mm | | | + 157 mm | | | + 37 mm | | | - 23 mm | | |
| | Height | x | Width | Height | x | Width | Height | x | Width | Height | x | Width | Height | x | Width | Height | x | Width |
| | | | 660 | | | 584 | | | 591 | | | 741 | | | 621 | | | 561 |
| | | | 785 | | | 709 | | | 716 | | | 866 | | | 746 | | | 686 |
| | | | 910 | | | 834 | | | 841 | | | 991 | | | 871 | | | 811 |
| | | | 1035 | | | 959 | | | 966 | | | 1116 | | | 996 | | | 936 |
| | | | 1160 | | | 1084 | | | 1091 | | | 1241 | | | 1121 | | | 1061 |
| | | 1285 | | | 1209 | | | 1216 | | | 1366 | | | 1246 | | | 1186 | |

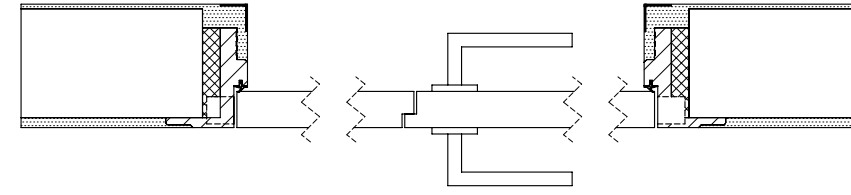
| | + 38 mm | | 0 | | + 8 mm | | + 83 mm | | + 23 mm | | - 7 mm | |
|--|---------|------|------|------|--------|------|---------|------|---------|------|--------|------|
| | Height | 2053 | 2015 | 2153 | 2115 | 2260 | 2222 | 2385 | 2347 | 2510 | 2472 | 2635 |
| | 2760 | 2722 | 2885 | 2847 | 3010 | 2972 | | | | | | |
| | 2098 | 2038 | 2198 | 2138 | 2305 | 2245 | 2430 | 2370 | 2555 | 2495 | 2680 | 2620 |
| | 2038 | 2008 | 2138 | 2108 | 2245 | 2215 | 2340 | 2340 | 2465 | 2465 | 2590 | 2590 |
| | 2098 | 2038 | 2198 | 2138 | 2305 | 2245 | 2430 | 2370 | 2555 | 2495 | 2680 | 2620 |
| | 2098 | 2038 | 2198 | 2138 | 2305 | 2245 | 2430 | 2370 | 2555 | 2495 | 2680 | 2620 |
| | 2098 | 2038 | 2198 | 2138 | 2305 | 2245 | 2430 | 2370 | 2555 | 2495 | 2680 | 2620 |
| | 2098 | 2038 | 2198 | 2138 | 2305 | 2245 | 2430 | 2370 | 2555 | 2495 | 2680 | 2620 |
| | 2098 | 2038 | 2198 | 2138 | 2305 | 2245 | 2430 | 2370 | 2555 | 2495 | 2680 | 2620 |

Unfinished wall thickness minimum 100 mm
Dimensions without chiseling

For mounting with a metal stud wall / dry wall please use a reinforced U profile with wood.
The profile must be screwed at the bottom and at the ceiling.



OKFF = Oberkante Fertig Fußboden
Top finished floor



Double door

In the dimension table, the outer dimension of the door leaf is the basic dimension.
Calculation tool can be found at <https://www.bodor.eu/producten/under-cover-doorframes>

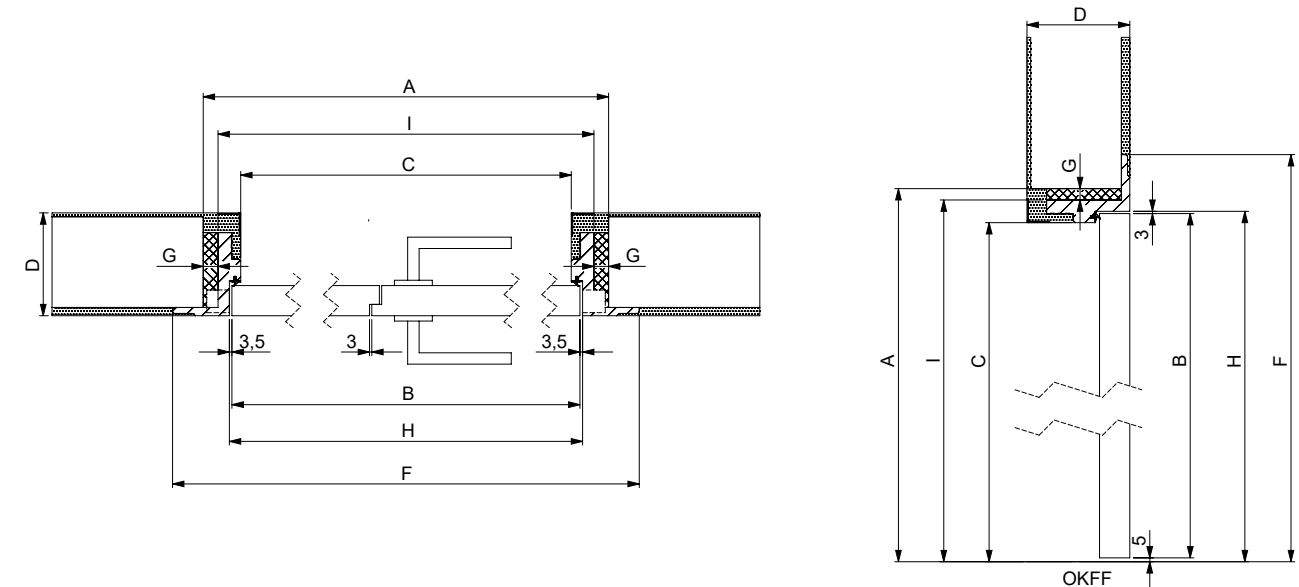
| | A | | | B | | | H | | | F | | | I | | | C | | |
|-------|-------------------------|---|-------|----------------|---|-------|----------------|---|-------|-----------------------|---|-------|----------------------------|---|-------|---------------------|---|-------|
| | Structural wall opening | | | Door dimension | | | UC rebate size | | | Frame outer dimension | | | Frame outer edge dimension | | | Clearance dimension | | |
| Width | + 86 mm | | | 0 | | | + 7 mm | | | + 157 mm | | | + 37 mm | | | - 23 mm | | |
| | Height | x | Width | Height | x | Width | Height | x | Width | Height | x | Width | Height | x | Width | Height | x | Width |
| | | | 1520 | | | 1434 | | | 1441 | | | 1591 | | | 1471 | | | 1411 |
| | | | 1770 | | | 1684 | | | 1691 | | | 1841 | | | 1721 | | | 1661 |
| | | | 2020 | | | 1934 | | | 1941 | | | 2091 | | | 1971 | | | 1911 |

| | + 38 mm | | 0 | | + 8 mm | | + 83 mm | | + 23 mm | | - 7 mm | |
|--|---------|------|------|------|--------|------|---------|------|---------|------|--------|------|
| | Height | 2053 | 2015 | 2158 | 2115 | 2265 | 2222 | 2390 | 2347 | 2515 | 2472 | 2640 |
| | 2765 | 2722 | 2890 | 2847 | 3015 | 2972 | | | | | | |
| | 2098 | 2038 | 2198 | 2138 | 2305 | 2245 | 2430 | 2370 | 2555 | 2495 | 2680 | 2620 |
| | 2098 | 2038 | 2198 | 2138 | 2305 | 2245 | 2430 | 2370 | 2555 | 2495 | 2680 | 2620 |
| | 2098 | 2038 | 2198 | 2138 | 2305 | 2245 | 2430 | 2370 | 2555 | 2495 | 2680 | 2620 |
| | 2098 | 2038 | 2198 | 2138 | 2305 | 2245 | 2430 | 2370 | 2555 | 2495 | 2680 | 2620 |
| | 2098 | 2038 | 2198 | 2138 | 2305 | 2245 | 2430 | 2370 | 2555 | 2495 | 2680 | 2620 |
| | 2098 | 2038 | 2198 | 2138 | 2305 | 2245 | 2430 | 2370 | 2555 | 2495 | 2680 | 2620 |
| | 2098 | 2038 | 2198 | 2138 | 2305 | 2245 | 2430 | 2370 | 2555 | 2495 | 2680 | 2620 |

* 2 x 722 mm
* 2 x 847 mm
* 2 x 972 mm

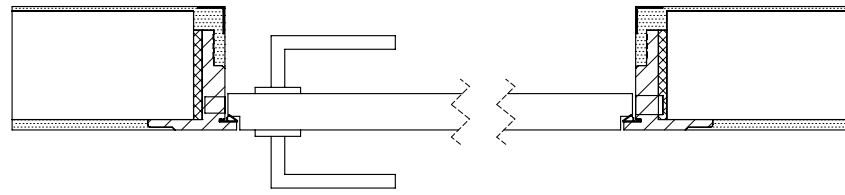
Unfinished wall thickness minimum 100 mm
Dimensions without chiseling

For mounting with a metal stud wall / dry wall please use a reinforced U profile with wood.
The profile must be screwed at the bottom and at the ceiling.



OKFF = Oberkante Fertig Fußboden
Top finished floor

RE-Under-Cover Doorframes



Single door

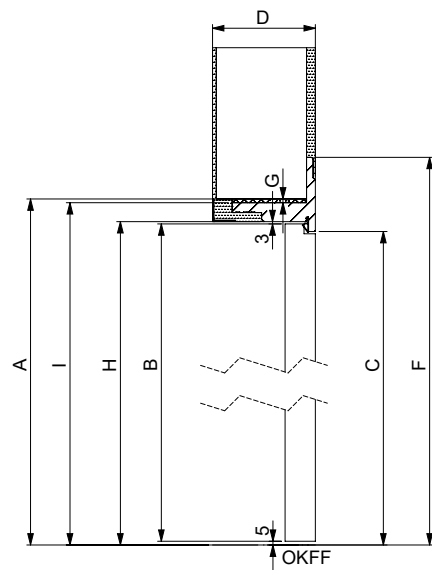
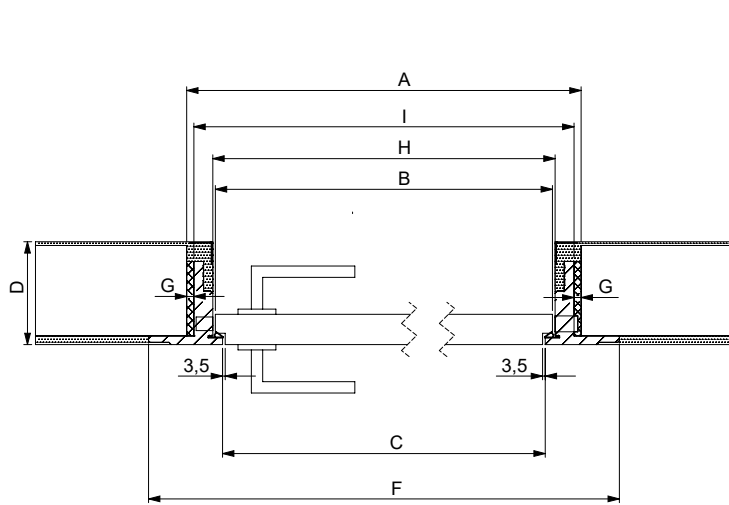
In the dimension table, the outer dimension of the door leaf is the basic dimension.
 Calculation tool can be found at <https://www.bodor.eu/producten/re-under-cover-doorframes-reverse>

| | A | | | B | | | H | | | F | | | I | | | C | | |
|-------|-------------------------|------|-------|----------------|------|-------|----------------|------|-------|-----------------------|------|-------|----------------------------|------|-------|---------------------|------|-------|
| | Structural wall opening | | | Door dimension | | | UC rebate size | | | Frame outer dimension | | | Frame outer edge dimension | | | Clearance dimension | | |
| Width | + 90 mm | | | 0 | | | + 7 mm | | | + 176 mm | | | + 56 mm | | | - 48 mm | | |
| | Height | x | Width | Height | x | Width | Height | x | Width | Height | x | Width | Height | x | Width | Height | x | Width |
| | | | 674 | | | 584 | | | 591 | | | 760 | | | 640 | | | 536 |
| | | | 799 | | | 709 | | | 716 | | | 885 | | | 765 | | | 661 |
| | | | 924 | | | 834 | | | 841 | | | 1010 | | | 890 | | | 786 |
| | | | 1049 | | | 959 | | | 966 | | | 1135 | | | 1015 | | | 911 |
| | | | 1174 | | | 1084 | | | 1091 | | | 1260 | | | 1140 | | | 1036 |
| | | 1299 | | | 1209 | | | 1216 | | | 1385 | | | 1265 | | | 1161 | |

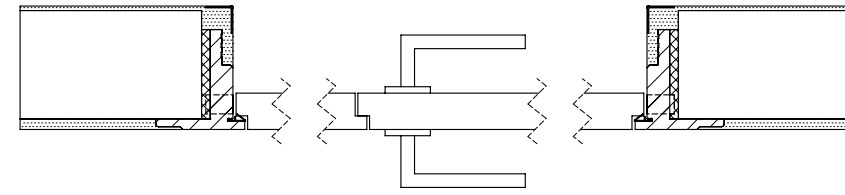
| | | | | | | | | | | | | | | | | | | |
|--------|----------------|--|------|----------|--|------|---------------|--|------|----------------|--|------|----------------|--|------|---------------|--|------|
| Height | + 48 mm | | | 0 | | | + 8 mm | | | + 93 mm | | | + 33 mm | | | - 5 mm | | |
| | 2063 | | 2015 | 2023 | | 2108 | 2048 | | 2110 | 2148 | | 2210 | 2110 | | 2217 | 2342 | | 2467 |
| | 2163 | | 2115 | 2123 | | 2208 | 2148 | | 2210 | 2148 | | 2210 | 2110 | | 2217 | 2342 | | 2467 |
| | 2270 | | 2222 | 2230 | | 2315 | 2255 | | 2217 | 2255 | | 2217 | 2217 | | 2217 | 2342 | | 2467 |
| | 2395 | | 2347 | 2355 | | 2440 | 2380 | | 2342 | 2380 | | 2342 | 2342 | | 2342 | 2342 | | 2342 |
| | 2520 | | 2472 | 2480 | | 2565 | 2505 | | 2467 | 2505 | | 2467 | 2467 | | 2467 | 2467 | | 2467 |
| | 2645 | | 2597 | 2605 | | 2690 | 2630 | | 2592 | 2630 | | 2592 | 2592 | | 2592 | 2592 | | 2592 |
| | 2770 | | 2722 | 2730 | | 2815 | 2755 | | 2717 | 2755 | | 2717 | 2717 | | 2717 | 2717 | | 2717 |
| | 2895 | | 2847 | 2855 | | 2940 | 2880 | | 2842 | 2880 | | 2842 | 2842 | | 2842 | 2842 | | 2842 |
| | 3020 | | 2972 | 2980 | | 3065 | 3005 | | 2967 | 3005 | | 2967 | 2967 | | 2967 | 2967 | | 2967 |

Unfinished wall thickness minimum 100 mm
 Dimensions without chiseling

For mounting with a metal stud wall / dry wall please use a reinforced U profile with wood.
 The profile must be screwed at the bottom and at the ceiling.
 The corner profile should be of non-magnetic material due to the magnetic lock.



OKFF = Oberkante Fertig Fußboden
 Top finished floor



Double door

In the dimension table, the outer dimension of the door leaf is the basic dimension.
 Calculation tool can be found at <https://www.bodor.eu/producten/re-under-cover-doorframes-reverse>

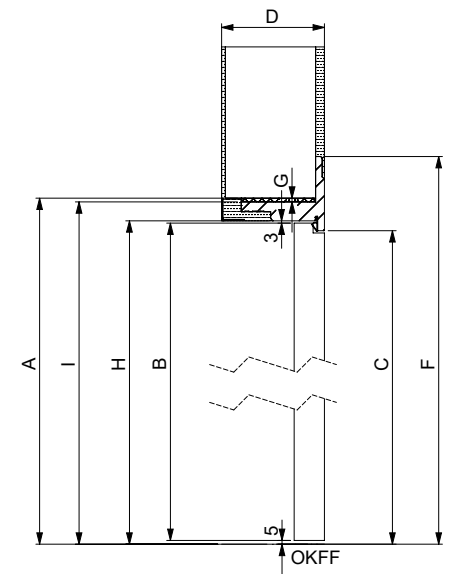
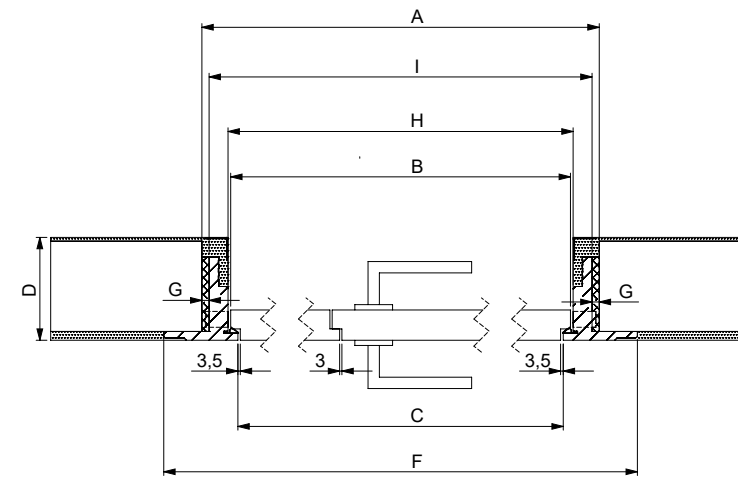
| | A | | | B | | | H | | | F | | | I | | | C | | |
|-------|-------------------------|---|-------|----------------|---|-------|----------------|---|-------|-----------------------|---|-------|----------------------------|---|-------|---------------------|---|-------|
| | Structural wall opening | | | Door dimension | | | UC rebate size | | | Frame outer dimension | | | Frame outer edge dimension | | | Clearance dimension | | |
| Width | + 90 mm | | | 0 | | | + 7 mm | | | + 176 mm | | | + 56 mm | | | - 77 mm | | |
| | Height | x | Width | Height | x | Width | Height | x | Width | Height | x | Width | Height | x | Width | Height | x | Width |
| | | | 1524 | | | 1434 | | | 1441 | | | 1610 | | | 1490 | | | 1357 |
| | | | 1774 | | | 1684 | | | 1691 | | | 1860 | | | 1740 | | | 1607 |
| | | | 2024 | | | 1934 | | | 1941 | | | 2110 | | | 1990 | | | 1857 |

| | | | | | | | | | | | | | | | | | | |
|--------|----------------|--|------|----------|--|------|---------------|--|------|----------------|--|------|----------------|--|------|---------------|--|------|
| Height | + 48 mm | | | 0 | | | + 8 mm | | | + 93 mm | | | + 33 mm | | | - 5 mm | | |
| | 2063 | | 2015 | 2023 | | 2108 | 2048 | | 2110 | 2108 | | 2110 | 2110 | | 2110 | 2110 | | 2110 |
| | 2163 | | 2115 | 2123 | | 2208 | 2148 | | 2210 | 2108 | | 2110 | 2110 | | 2110 | 2110 | | 2110 |
| | 2270 | | 2222 | 2230 | | 2315 | 2255 | | 2217 | 2108 | | 2110 | 2110 | | 2110 | 2110 | | 2110 |
| | 2395 | | 2347 | 2355 | | 2440 | 2380 | | 2342 | 2108 | | 2110 | 2110 | | 2110 | 2110 | | 2110 |
| | 2520 | | 2472 | 2480 | | 2565 | 2505 | | 2467 | 2108 | | 2110 | 2110 | | 2110 | 2110 | | 2110 |
| | 2645 | | 2597 | 2605 | | 2690 | 2630 | | 2592 | 2108 | | 2110 | 2110 | | 2110 | 2110 | | 2110 |
| | 2770 | | 2722 | 2730 | | 2815 | 2755 | | 2717 | 2108 | | 2110 | 2110 | | 2110 | 2110 | | 2110 |
| | 2895 | | 2847 | 2855 | | 2940 | 2880 | | 2842 | 2108 | | 2110 | 2110 | | 2110 | 2110 | | 2110 |
| | 3020 | | 2972 | 2980 | | 3065 | 3005 | | 2967 | 2108 | | 2110 | 2110 | | 2110 | 2110 | | 2110 |

* 2 x 722 mm
 * 2 x 847 mm
 * 2 x 972 mm

Unfinished wall thickness minimum 100 mm
 Dimensions without chiseling

For mounting with a metal stud wall / dry wall please use a reinforced U profile with wood.
 The profile must be screwed at the bottom and at the ceiling.
 The corner profile should be of non-magnetic material due to the magnetic lock.



OKFF = Oberkante Fertig Fußboden
 Top finished floor

bod'or

WWW.BODOR.EU

Bod'or KTM GmbH

Benzstraße 17

D - 46395 Bocholt (Germany)

T: +49 (0)28 71 - 21 45 0

F: +49 (0) 28 71 - 18 44 00

E: info@bodor.eu